

UNITED STATES OF AMERICA

IMMIGRATION OPTIONS FOR
INVESTORS & ENTREPRENEURS



CHUNG, MALHAS & MANTEL
A PROFESSIONAL LIMITED LIABILITY COMPANY



CHUNG, MALHAS & MANTEL, PLLC

The Pioneer Building
600 First Avenue, Suite 400
Seattle, Washington 98104
Telephone: (206) 264-8999
Facsimile: (206) 264-9098
Skype: cmmrlawfirm.connect
Website: www.cmmrlawfirm.com

General Disclaimer: This booklet, all of its materials, and the illustrations contained herein are for general instructional and educational purposes only. They are not, and are not intended to provide, legal advice about what to do or not to do in any particular case.

All data & information in this booklet is solely offered as examples. No person should rely on the materials or information in this booklet to make decisions about investing or participating in any EB-5 visa immigration program or non-immigrant investment visas without consulting with an attorney.

If you have questions about the content contained in this booklet, please contact the law firm of CHUNG, MALHAS & MANTEL, PLLC.

CHUNG, MALHAS & MANTEL[®] 2013

Copyright © 2013 by CHUNG, MALHAS & MANTEL, PLLC.

All rights reserved. No part of this booklet may be reproduced or transmitted in any form or by any means, electronic or mechanical, including photocopying, recording, or any information storage retrieval system, without written permission from CHUNG, MALHAS & MANTEL, PLLC. No copyright claim on U.S. government material.

Request for permission to make electronic or print copies of any part of this booklet should be mailed to CHUNG, MALHAS & MANTEL, PLLC, 600 First Avenue, Suite 400, Seattle, Washington 98104 or e-mailed to EB5investors@cmmrlawfirm.com.

TABLE OF CONTENTS

THE PARTNERS	iii
FOREWORD	v
PREFACE	vi

CHAPTER I. Immigrant – EB-5 Investor Program (Green Card)

Overview.....	1
EB-5 Immigrant Investment Flowchart.....	2
Steps to Qualify Under the EB-5 Program.....	3
EB-5 Requirements.....	3
EB-5 Program Benefits.....	4
Benefits of Immigrating to the United States.....	4
Ways to Invest Through EB-5.....	5
Industry Investment Areas.....	6
EB-5 Fee Structure.....	7
EB-5 Statistics.....	8

CHAPTER II. Non-Immigrant – E-1 Treaty Trader/ E-2 Treaty Investor Visa

Overview.....	10
E-1 / E-2 Process Flowchart.....	10
Requirements.....	11
Treaty Trader (E-1).....	11
Treaty Investor (E-2).....	11
E Visa Restrictions.....	12
E-1/E-2 Fee Structure.....	12
Treaty Countries.....	13

CHAPTER III. Non-Immigrant – L-1 Intracompany Transferee Visa

Overview.....	16
Qualification Requirements.....	16
L-1 Process Flowchart.....	18
Blanket Petitions.....	19
L-1 Fee Structure.....	19

APPENDIX A. Comparative Tables

Visa Comparisons.....	22
Professional & Legal Fees.....	23

APPENDIX B. The Fifty States

Alabama through Wyoming.....	26 - 76
United States Average Annual Precipitation (Map).....	77
United States Population Distribution (Map).....	78

THE PARTNERS



EDWARD C. CHUNG, ESQ.

Senior Partner

Admitted in Washington

Echung@cmmrlawfirm.com

Mr. Chung is the founding partner of CHUNG, MALHAS & MANTEL, PLLC. Mr. Chung represents clients in commercial transactions, negotiations, mergers and acquisitions, corporate law, and complex civil and criminal litigation. Mr. Chung has successfully represented and counseled clients in a broad spectrum of legal matters in both state and federal courts. In addition, He has over a decade of courtroom experience, and has represented companies and individuals before administrative tribunals and appellate courts, including the United States Court of Appeals for the Ninth Circuit and the Supreme Court of the State of Washington. Mr. Chung has also advised foreign and local investors in setting up corporations, franchises and subsidiaries in the United States and has drafted numerous contracts tailored specifically for multi-million dollar transactions. Mr. Chung has worked in pre-trial and post trial litigation with British Petroleum (BP), and nationally renowned law firms in Washington, California, and Pennsylvania. He has also advised companies in China, Russia, India, Canada, the Middle East and Europe in doing business in the United States. Mr. Chung is a graduate of Villanova University School of Law, and California State University, Fullerton where he majored in Political Science. Mr. Chung speaks English and conversational Spanish.



DR. DIMA N. MALHAS, ESQ.

LL.B. J.D. LL.M. (ILS)

Managing Partner

Admitted in Washington

Dmalhas@cmmrlawfirm.com

Dr. Malhas represents clients in international business transactions, negotiations, investment immigration, and private and public offerings worldwide. She successfully formed multi-million dollar global partnerships between entrepreneurs, foreign investors, and venture capitalists. Dr. Malhas has been an international consultant for the United Nations and the World Bank for the Middle East and the GCC countries for nearly a decade. She has also worked with U.S. and foreign organizations and law firms, and U.S. Department of State on projects in New York and Washington DC, and has published papers, co-authored and edited publications. Dr. Malhas has advised approximately 40 foreign investors on EB-5 investment immigration, including business expansion, joint ventures, working with law firms in Maryland and Washington DC as a foreign associate. Dr. Malhas obtained a Doctorate of Jurisprudence from Golden Gate University School of Law, a Masters of International Law from American University Washington College of Law, with coursework in Paris, Geneva, & Brussels, and a Bachelor of Law from University of Jordan School of Law. She was honored a Doctoral Equivalency from the Ministry of Higher Education and Scientific Research in Jordan. She was also awarded a certificate for Legislative Drafting and Policy Making from the International Law Institute & Georgetown Law Center. Dr. Malhas speaks English and Arabic.



MARK MANTEL, ESQ.

Partner

Admitted in New York

Mmantel@cmmrlawfirm.com

Mr. Mantel has extensive experience in international commercial negotiations and complex debt restructurings. He has represented individuals and corporations in bankruptcy adversary proceedings, federal civil and criminal litigation, and advised U.S. and foreign companies on public and private international law, investment, and strategies for mitigating risk associated with foreign joint-ventures. Mr. Mantel has advised a broad range of clients throughout the world on investment in the United States and has advised American and British nationals on employment and corporate law issues in France. Prior to joining CHUNG, MALHAS & MANTEL, PLLC, Mr.

Mantel has worked at prominent law firms in Lille, France and in New York. He also worked on a complex pharmaceutical class-action litigation, which ultimately saved the defendant billions of dollars. Mr. Mantel has lived in many countries throughout the world including Russia, France, Germany, Denmark and the United Kingdom. Mr. Mantel has participated in various international cultural exchanges including introducing American student groups to the Great Master paintings at the Hermitage museum in St. Petersburg, Russia. Mr. Mantel is a graduate of Villanova University School of Law where he concentrated on private international law, and New York University Stern School of Business where he majored in Finance and Humanities. Mr. Mantel speaks Russian, French and English.

FOREWORD



Time is valuable. If you have invested your time in opening this investment immigration booklet, prepared for you by the law firm of CHUNG, MALHAS & MANTEL, PLLC, then chances are that you are part of an elite class of entrepreneurs that recognizes that opportunity has no borders. This visionary trait is an attribute adopted by many of the individuals and businesses that seek our guidance in establishing profit over international waters and legal residency in the United States of America.

Although not known by many citizens of other countries, the United States government has created a number of immigration passageways to obtaining either legal status, residency or United States citizenship through investment in a particular business or industry in America. If you are seeking to invest in the United States or are already investing, why not benefit from your investment?

Whether for investment purposes or whether you are seeking to obtain a United States Green Card for yourself or your family, the rewards are indisputable. As a United States Green Card holder you may enter and leave the United States at will, avoid the time consuming delays involved in processing a visa application, and within 3 years of obtaining your Green Card you are eligible to apply for your United States citizenship. From a business standpoint, acquiring a United States Green Card makes sense. As a United States Green Card holder you have the right to purchase and sell real property and establish a corporation within the United States. Moreover, you are authorized to work in the United States, receive Social Security and remain in the United States without worrying about staying beyond the amount of time designated on your I-94. In addition, foreign nationals seeking to attend universities or colleges in the United States are eligible to pay considerably less in tuition if they obtain their Green Card.

The clients of CHUNG, MALHAS & MANTEL, PLLC are individuals and businesses that not only dare to reach our shores, but thrive when they get here. They are esteemed men and women of commerce, practitioners of high finance, and industrialists hailing from all over the world who understand that there is little difference between obstacle and opportunity and are able to turn both to their advantage. They have reached the pinnacle of esteem and standing in their own country and desire to pursue investment immigration with the United States as a compliment to their overall investment structure. When our clients speak, the parliaments and ministers of state in their home country listen. That is why when choosing a law firm to represent them overseas, they not only expect high quality service, but also demand it.

As the founding partner of CHUNG, MALHAS & MANTEL, PLLC, I have made it my mission to insure that the investment immigration process for our clients is navigated with unfaltering precision, wise forethought, and most important of all, clear vision. Our team of talented attorneys and staff are dedicated and trained to providing first class legal representation to our clients, and are committed to setting the standard of excellence globally through personalized service. Because we seek to represent the bold ones, the visionaries, dreamers and doers, we stand beside our clients and put our name in ink beside theirs as they venture forth to unlock the door to the remarkable.

On behalf of the partners, attorneys and staff of CHUNG, MALHAS & MANTEL, PLLC, we look forward to exceeding your expectations and welcome you and your family to bring your visionary ideals, rich culture and insight to this great land of opportunity.

Sincerely,

A handwritten signature in blue ink, appearing to read "Edward C. Chung".

Edward C. Chung, Esq.
Senior Partner

PREFACE

BY DR. DIMA N. MALHAS, ESQ.
LL.B. J.D. LL.M. (ILS)
MANAGING PARTNER

The year 2012 marked a momentous time in history: from the European economic crises, Euro austerity and bailouts, to revolutions erupting and dynasties falling in the Middle East; from the passing of Neil Armstrong, the first man to walk on the moon, to the landing of the Curiosity Rover on Mars; from the Indian blackout - the largest power outage in history, affecting 620 million people, about 9% of the world's population, to the Solar Sandy Project providing renewable alternative energy which reignited in one week the skies of New York City; and from the first anniversary of the death of Steve Jobs, the "Father of the Digital Revolution" to the revolution of "techonomy" and the socioeconomic impact of social media, predominantly Facebook, Yahoo, Google and Baidu, changing worldwide dynamics and challenging sociopolitical maps and economic theories.

In spite of worldwide economic predicament, the United States has been steadfast in its economic recovery. With the November 2012 Presidential reelection leaving a balance of power in Congress, the United States is focused on rebuilding its economy amid global uncertainty, making investment in the United States ever so timely.

This is evident by the September 28, 2012 U.S. President Obama's signing on the three-year extension of EB-5 Immigrant Investor Regional Center Program reauthorizing and extending it through **September 2015**.

The year 2013 is a ripe opportunity for investors and entrepreneurs to invest in the United States of America and stimulate global economy. The EB-5 bill signed into law invites an exclusive group of world-class entrepreneurs, esteemed investors, and notable venture capitalists, from all around the world into investing in the recovery of the United States economy through direct or pooling capital and job creation. It is therefore most judiciously provided, especially when investing in the United State's real estate; where indicators show increased stability and growth while yielding lucrative returns on capital gains and benefiting from the finest interest rates. Indeed, investing capital at this juncture strategically aims for high profitable margins. This heavenly "Buyer's Market" is an exceptional time to buy a home, hotel, or invest into or establish an enterprise; the selections and opportunities are endless.

Honoring true investment efforts per the outlined law, the United States Congress has bestowed in gratitude upon the international investor and his/her family United States

Permanent Residency (Green Card), leading to the option of Citizenship while being protected by the nation's sovereignty and constitution.

Providing an abundance of choices in its supreme education and premium universities, the United States ranks as one of the top standard-of-living countries in the world, according to The World Bank's World Development Indicators and GDP per Capita. For centuries, this nation prides itself with the American Dream, and continues to offer it to generations to come.

The purpose of this booklet, "United States of America Immigration Options for Investors & Entrepreneurs" is to proffer knowledge and information pertaining to the latest updates of current investment opportunities and immigration options under the United States laws.

CHAPTER I of this booklet discusses immigrant (Green Card) investment opportunities and privileges for international investors and entrepreneurs under the EB-5 Program.

CHAPTER II discusses non-immigrant investment opportunities and privileges for international investors and entrepreneurs under the E-1/E-2 Treaty Trader/Investor Visa.

CHAPTER III discusses non-immigrant investment opportunities and privileges for international investors and entrepreneurs under the Intracompany Transferee Executive or Manager L-1 Visa.

At CHUNG, MALHAS & MANTEL, PLLC, we deliver state of the art legal representation and legal advice to investors and their families in wealth management, trust funds, corporate structuring, mergers and acquisitions, restructuring outstanding investment projects, investment immigration, private and public offerings, and all related matters of commercial transactions. We work with a multidisciplinary team of economists, financial analysts, and CPA international tax experts, to provide inclusive services to an exclusive tier of investors. Our partners, attorneys and professionals are multi-lingual; we speak Arabic, English, Farsi, French, German, Italian, Japanese, Korean, Mandarin Chinese, Russian, Spanish, and sign language.

In all our undertakings, we adhere to strict rules of confidentiality and the highest professional standards.

We look forward to a prosperous legal representation. On behalf of our firm, please accept the assurance of our highest respect.

We welcome you and your family to the United States of America.





CHAPTER I
IMMIGRANT
EB-5 INVESTOR
PROGRAM



CHUNG, MALHAS & MANTEL
A PROFESSIONAL LIMITED LIABILITY COMPANY

EB-5 IMMIGRANT INVESTORS & ENTREPRENEURS

OVERVIEW

On **September 28th, 2012**, United States President Obama signed Senate Bill 3245 into law {Public Law 112-176}¹, thereby providing a **three year reauthorization** of the EB-5 Regional Center Program. This law extends the Program through **September 2015**.

Originally created by the Immigration Act of 1990, the Fifth Employment-Based Preference (“EB-5”) Immigrant Investor Program for International Investors and/or Entrepreneurs offers a unique opportunity to obtain United States Permanent Residency (Green Card) for International Investors and/or Entrepreneurs who invest in the United States. Every year, Congress allocates 10,000 visas for the EB-5 Program for investors seeking to invest in the United States economy and create at least 10 full-time jobs.

To qualify for the EB-5 Immigrant Investor Program, an investor must **invest \$1,000,000** or at least **\$500,000 in a targeted employment area (TEA)**² in the form of cash, cash equivalents, equipment, inventory or other tangible property, thereby creating at least **10 full-time jobs** for legal U.S. workers within **two years**.

Upon approval of an investor’s petition, the investor, the investor’s spouse, and all their children under the age of 21 will be granted conditional permanent residence status (Green Card) for two years, with all the benefits of a permanent green card holder.

During the required two-year investment period, an investor may obtain any profit on his or her investment.

In the 90-day period prior to the expiration of the required two-year investment period, the investor, the investor’s spouse, and their children under the age of 21 **must** submit documents demonstrating that the required investment has been made and that at least 10 full-time jobs have been created, or else demonstrate with appropriate evidence that those criteria will be satisfied within a reasonable time period.

Beginning 90 days prior to the five-year anniversary of receiving their initial green card, the investor, the investor’s spouse, and their children under the age of 21 **may** file for U.S. Citizenship & obtain a U.S. Passport.

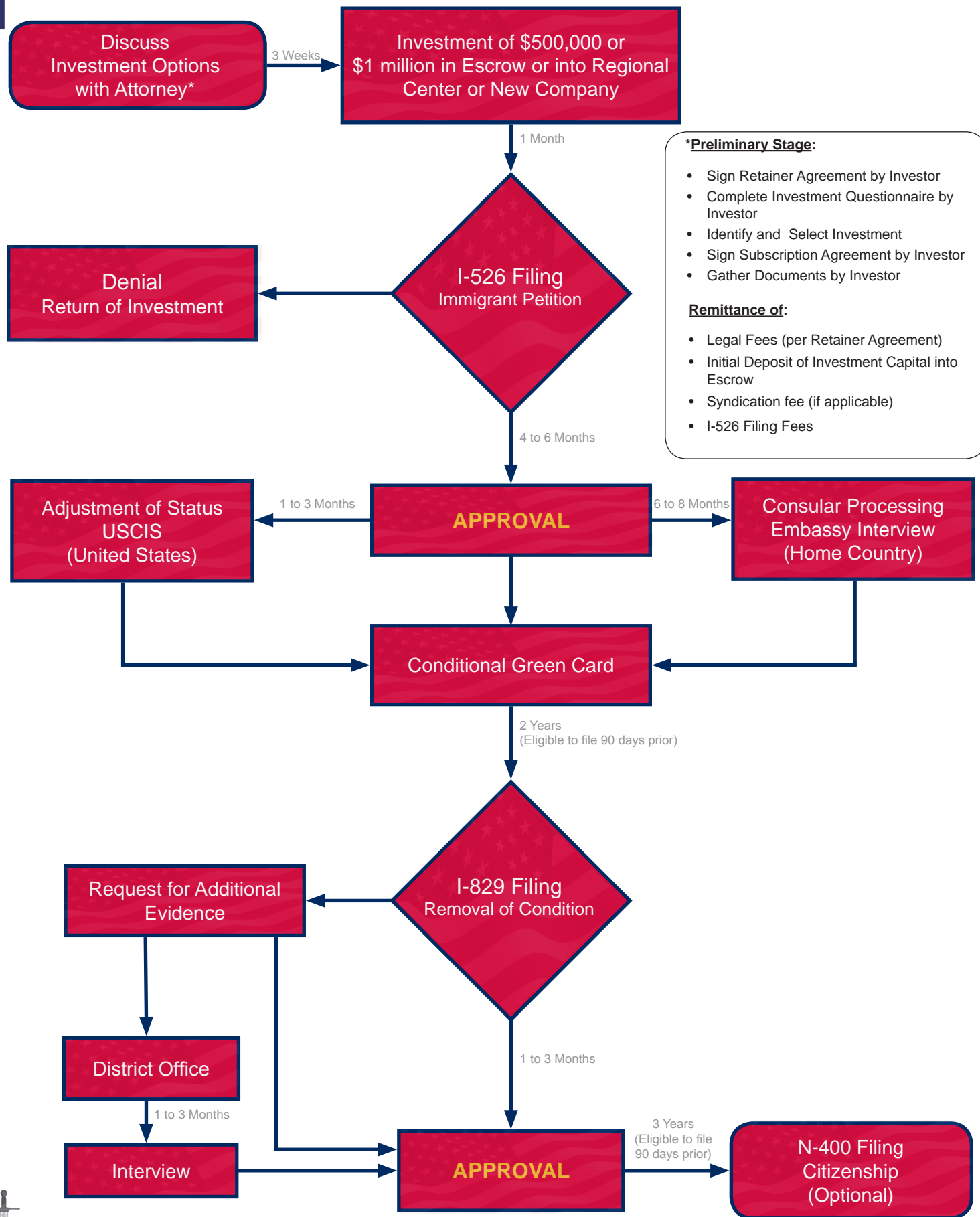


¹**PUBLIC LAW 112-176**, 112th Congress (SEPT. 28, 2012). Hyperlink:
<http://www.gpo.gov/fdsys/pkg/PLAW-112publ176/pdf/PLAW-112publ176.pdf>

² A **Targeted Employment Area (TEA)** is an area that, at the time of investment, is a rural area or an area experiencing unemployment of at least 150 percent of the national average rate. A **Rural Area** is any area outside a metropolitan statistical area (as designated by the Office of Management and Budget) or outside the boundary of any city or town having a population of 20,000 or more according to the decennial census.



EB-5 IMMIGRANT INVESTMENT FLOWCHART



NOTE: Estimated timeline may vary depending on USCIS processing.



STEPS TO QUALIFY UNDER THE EB-5 PROGRAM

1. **Eligibility** - Check your eligibility;
2. **Legal Counsel** – Retain Legal Counsel and Team to prepare and file I-526 Petition along with supporting documentation;
3. **Due Diligence** - Choose the “best” path for your investment in the United States under the EB-5 Program [New Enterprise, Existing Enterprise, or Regional Center];
4. **Supporting Documents** - Collect supporting documents [Biographic, Financial (net worth), Clearances];
5. **Source of Funds** - Gather evidentiary documents in support of Legal Acquisition of Capital;
6. **Petition Preparation** - Prepare petition for Investor’s signature;
7. **Capital Transfer** – Wire Transfer of Capital (USD \$500,000 or USD \$1,000,000) into Escrow Account or directly into Investment;
8. **2-Year U.S. Conditional Permanent Residence Green Card** - Upon I-526 Petition Approval:
 - a. If Investor and/or investor’s family is **in the United States**, Legal Counsel files for Adjustment of Status (I-485) for investor and family member(s) who thereby receive U.S. Permanent Residence conditioned upon the two-year investment (Conditional Green Card); or
 - b. If Investor and/or investor’s family is **outside the United States**, the investor and family undergo a U.S. Consular Interview at the U.S. Embassy and thereby receive the Conditional Green Card;
9. **U.S. Permanent Residence (Green Card)** - In the 90 days immediately prior to the two-year anniversary of receiving a conditional green card, Legal Counsel prepares and files Form I-829 to remove the two-year condition on permanent residency. If the requirements for investment and job-creation are fulfilled, investor and family receive U.S. Lawful Permanent Resident status (Permanent Green Card); and
10. **U.S. Citizenship & Passport** - Investor and family may apply for U.S. Citizenship beginning 90 days prior to the five-year anniversary of the date they received their conditional green card. Upon approval, investor and family receive U.S. Citizenship and Passports.

EB-5 REQUIREMENTS

1. **Capital Investment** – USD \$1,000,000 or USD \$500,000 in TEA;
2. **Investment in Enterprise** – New Enterprise, Existing Enterprise, or Regional Center;
3. **Job Creation** – Direct Employment of 10 full-time U.S. jobs in a New or Existing Enterprise or Indirect Employment of 10 full-time U.S. jobs in a Regional Center;
4. **Source of Funds** – Proof that the capital used in the investment was obtained through legal means;
5. **Managerial Capacity** – Investors must participate in the management of a New or Existing Enterprise;
6. **Fees & Costs** – Legal Fees, USCIS Filing Fees & Administrative Costs;
7. **Medical Check** – Investor and family must undergo a medical check; and
8. **Background Clearance** – Investor and family will be subject to Criminal and/or Immigration background checks.



EB-5 PROGRAM BENEFITS

- Obtain United States Green Card or Citizenship for the Investor and/or Entrepreneur, spouse, and ALL their children under 21 years of age;
- No education, business, or special training required;
- Any nationality may apply;
- No language requirement;
- Live and travel anywhere in the United States;
- No work limitation: take any job, run or start any business, even retire;
- No education limitations: students may apply to any U.S. school and avoid paying the international student rates;
- Wider job market for your children in the future;
- Property tax savings in some states; and
- Citizenship after five years (the two years spent as a conditional resident is counted towards the 5-year requirement).



BENEFITS OF IMMIGRATING TO THE UNITED STATES

- Invest, Work, Retire, Study, and Live anywhere in the United States;
- Enjoy high living standard: the United States is rated number 4 on HDI¹ ;
- Access to Elite Government Sponsored Public Schools, depending on residency location;
- Eligible to apply to top Medical, Law and Business Schools in the United States² ;
- Eligible for Residency Benefits (Social Security, Medicare, and Retirement Benefits, etc.);
- Obtain a high quality of life with lower expenses compared to other industrialized countries (European countries, such as Sweden);
- Ability to sponsor other family members to immigrate to the United States; and
- Travel freely all around the world for business, investment, or pleasure.

¹ The 2011 United Nations Human Development Index (HDI). The HDI is a comparative measure (standard means) of life expectancy, literacy, education, standards of living, and quality of life for countries worldwide.

² Most top Medical, Law and Business Schools in the U.S. do not accept or have restrictions on International Student applicants and F-1 Student Visa applicants.





New Business

Form a new original commercial enterprise that will create 10 jobs within a 2-year period.

Existing Business

(formed prior to November 29, 1990)

EXPANDING BUSINESS

The expansion of an existing business through investment of the required amount, so that a substantial change (at least 40%) in either the net worth, number of employees, or both.

"TROUBLED" BUSINESS

An enterprise that has been in existence for at least 2-years and has incurred a net loss during the 12- or 24-month period prior to the priority date on the immigrant investor's Form I-526. The loss for this period must be at least 20% of the troubled Business's net worth prior to the loss. Job preservation through investment of the required amount, so that the number of existing jobs is being or will be maintained at no less than the pre-investment level for a period of at least two years. (Number of Jobs preserved has to be no less than 10.)

RESTRUCTURING BUSINESS

The purchase of an existing business with simultaneous or subsequent restructuring or reorganization resulting in a new commercial enterprise.

Regional Center

Regional Centers pool investor's capital (foreign and local) and apply the funds toward projects to improve the economy in the approved area. They may directly own and operate businesses utilizing the invested capital, or they may loan money to projects operated by affiliated entities.



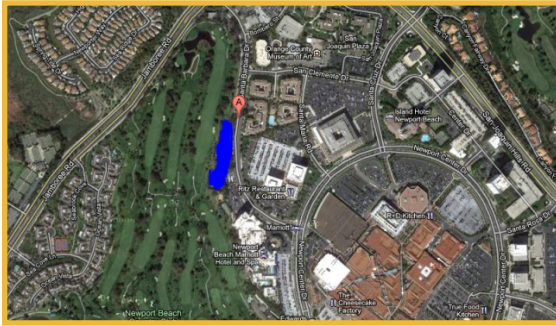
INDUSTRY INVESTMENT AREAS

Examples of primary industries for EB-5 investment projects:

COMMERCIAL REAL ESTATE



RESIDENTIAL REAL ESTATE



HOSPITALITY



ENERGY





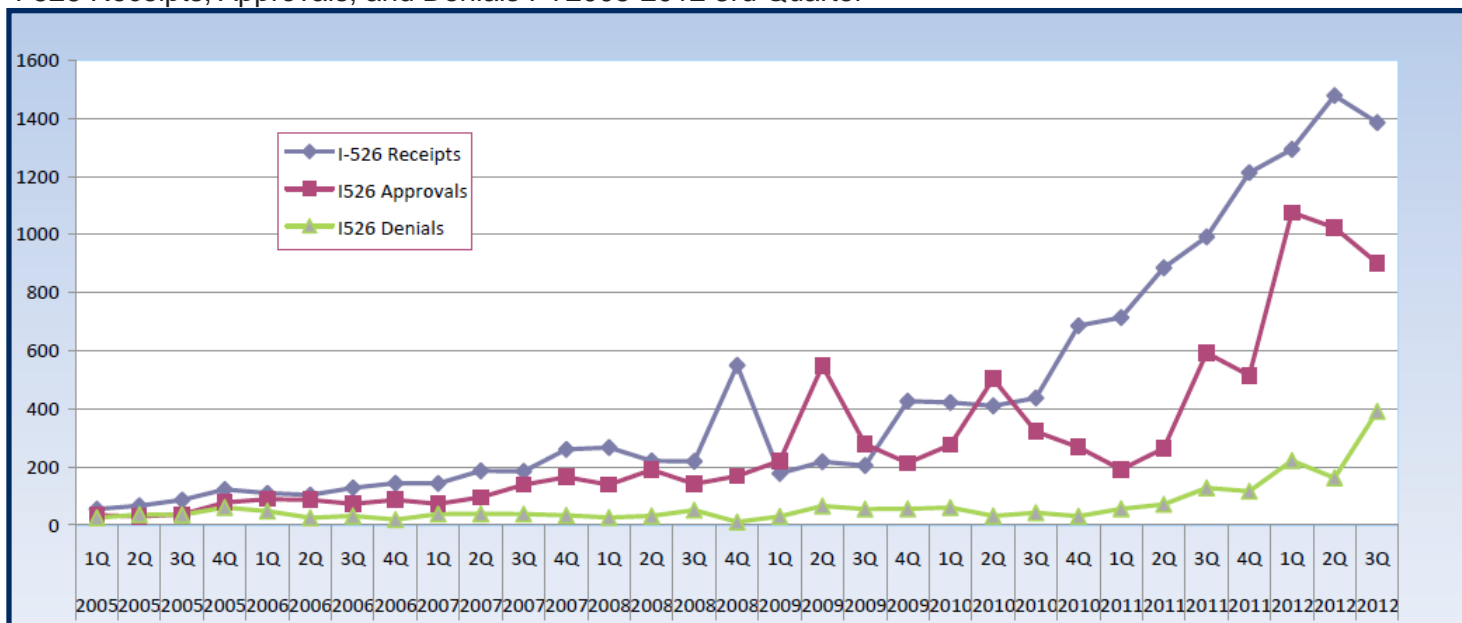
EB-5 Immigration Investment Fee Structure			
Phases	Description	Government Fees	Professional Fees
Phase I Document Preparation	State TEA Certification	N/A	<u>Legal Fees</u> <ul style="list-style-type: none"> Immigration Legal Fees: \$40,000 ALL PHASES I-V Investor & Family Members <u>Direct Investment</u> <ul style="list-style-type: none"> TEA Certification Fee: \$1,000 Corporate Legal Fees: Subscription Agreements (SEC Exempt & USCIS Compliance, etc.): \$10,000 - \$20,000 Investment Fees: (Business Plan Writer, Economist, etc.): <i>Billed at Cost</i> <u>Regional Center</u> <ul style="list-style-type: none"> Syndication Fee: \$40,000 - \$50,000 (Includes all Investment, Administrative & Financial) Depending on the Regional Center <ul style="list-style-type: none"> Escrow Agent Fees: (Optional) \$875 per release <u>International Tax CPA Consultant Fees</u> 1-hour complimentary advice depending on Investor's needs
Phase II EB-5 Petition	Form I-526, Petition Application (USCIS)	USCIS Fees: \$1,500	
Phase III EB-5 Processing	1. U.S. Processing (USCIS) Adjustment of Status: <ul style="list-style-type: none"> Form I-486 Application Biometrics 	<ul style="list-style-type: none"> USCIS Fees: \$985 (per person) Biometric Fee: \$85 (per person) 	
	2. Home Country (U.S. Embassy) Consular Processing	<ul style="list-style-type: none"> DOS Fees: \$380 (per person) 	
Phase IV Removal of Condition	1. Form I-829 Petition to Remove the Conditions	<ul style="list-style-type: none"> USCIS Fees: \$3,750 (per person) 	
	2. Biometrics	<ul style="list-style-type: none"> Biometric Fee: \$85 (per person) 	
Phase V Naturalization (Citizenship) (Optional)	1. Form N-400 Application	<ul style="list-style-type: none"> USCIS Fees: (\$595 per person) 	
	2. Biometrics	<ul style="list-style-type: none"> Biometric Fees: \$85 (per person) 	
Grand Total: \$57,395 - \$97,960		Total: \$6,395 - \$7,085	Total: \$51,000 - \$90,875
<p>* Government filing fees are subject to change.</p> <p>* Filing & Administrative Fees are constantly updating. For most current information please visit: http://www.uscis.gov; http://travel.state.gov/visa/forms/forms_1342.html & http://www.uscis.gov/portal/site/uscis.</p> <p>*Attorney Fees: Flat Fee (Does not include translations and other costs).</p> <p>*A detailed breakdown of fees is available upon request.</p>			



U.S. Citizenship and Immigration Services
Immigrant Petition by Alien Entrepreneur (I-526) and Petition by Entrepreneur to Remove Conditions (I-829)
Service-wide Receipts, Approvals, Denials
Fiscal Year(s): 2005 - 2012 (Third Quarter)

Fiscal YearA	I-526				I-829			
	Receipts	Approvals	Denials	Approval Percentage	Receipts	Approvals	Denials	Approval Percentage
2005	332	179	156	53%	37	184	112	62%
2006	486	336	124	73%	89	106	108	50%
2007	776	473	148	76%	194	111	49	69%
2008	1,257	640	120	84%	390	159	68	70%
2009	1,028	1,262	207	86%	437	347	56	86%
2010	1,955	1,369	165	89%	768	274	56	83%
2011	3,805	1,563	371	81%	2,345	1,067	46	96%
2012	4,156	3,002	775	79%	546	639	42	94%
Grand Total	13,795	8,824	2,066	81%	4,806	2,887	537	84%

I-526 Receipts, Approvals, and Denials FY2005-2012 3rd Quarter



U.S. Citizenship and Immigration Services
Number of Approved EB-5 Regional Centers
Fiscal Year(s): 2007-2012

FY07	11
FY08	25
FY09	72
FY10	114
FY11	174
FY12	209





CHAPTER II

NON-IMMIGRANT

E-1 TREATY TRADER

E-2 TREATY INVESTOR

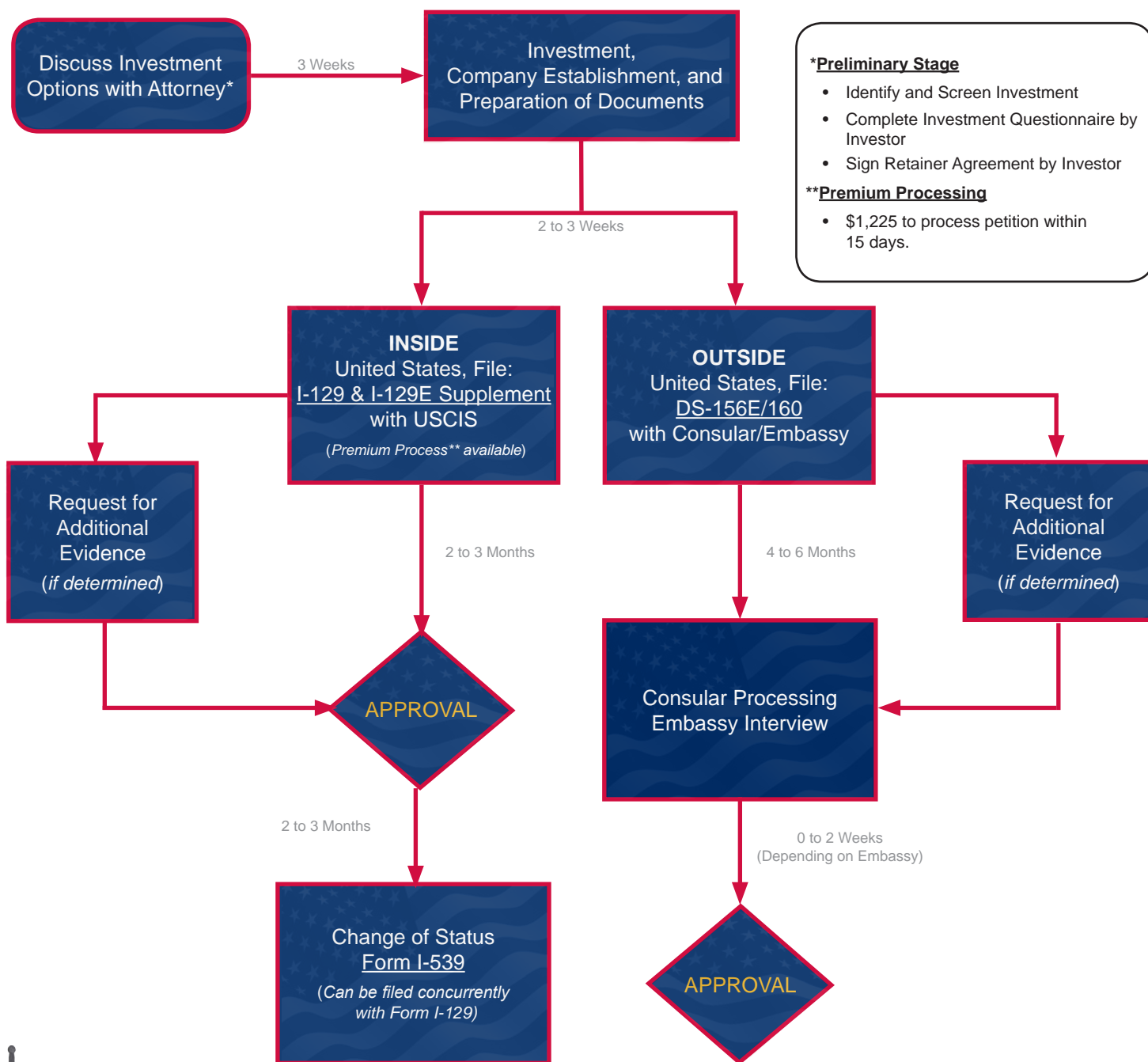
VISA

E-1/E-2 NON-IMMIGRANT TREATY TRADER/INVESTOR

OVERVIEW

The E visa category is designed for foreign business owners with substantial trade and investment interests in the United States. The E visa category is available for foreign nationals of a country that maintains a treaty of friendship, commerce and navigation with the United States. The category is divided into the E-1 visa, based on substantial trade relationships, and the E-2 visa, based on substantial investment.

E-1/E-2 PROCESS FLOWCHART



NOTE: Estimated timeline may vary depending on USCIS processing.





REQUIREMENTS

Treaty Trader (E-1)

The Applicant must be a national of a treaty country.

The trading firm for which the applicant is coming to the U.S. must have the same nationality* of the treaty country.

The international trade must be “substantial” in the sense that there is a sizable and continuing volume of trade between the countries and that more than 50% of the total volume of the company’s international trade must be between the U.S. and the treaty country.

The applicant must be employed in a supervisory or executive capacity, or possess highly specialized skills essential to the efficient operation of the firm. Ordinary skilled or unskilled workers do not qualify.

*Nationality of the Foreign Entity

At least 50% of the company must be owned by nationals of the treaty country.



Treaty Investor (E-2)

The investor must be a national of treaty country.

The investment must be substantial (it must be sufficient to ensure the successful operation of the enterprise).

The investment must be a real operating enterprise. Speculative or idle investments do not qualify. Uncommitted funds in a bank account or similar security are not considered an investment.

The investment enterprise may not be marginal. It must generate significantly more income than just to provide a living to the investor and family, or it must have a significant economic impact on the U.S. economy.

The investor must have control of the funds, and the investment must be at risk in the commercial sense. Loans secured with the assets of the investment enterprise are not allowed.

The investor must be coming to the U.S. to develop and direct the enterprise. If the applicant is not the principal investor, he or she must be employed in a supervisory or executive role, or possess special skills which make the employee’s services essential to the efficient operation of the business.

*Substantial Investment

1. *Substantial in a proportional sense (the application of the proportionality test): i.e., substantial in relationship to the total cost of either purchasing an established enterprise, or creating the type of enterprise under consideration;*
2. *Sufficient to ensure the treaty investor’s financial commitment to the successful operation of the enterprise; and*
3. *Of a magnitude to support the likelihood that the treaty investor will successfully develop and direct the enterprise. No set dollar figure constitutes a minimum amount of investment to be considered substantial for E-2 visa purposes.*





E VISA RESTRICTIONS

- The principal E visa holder may not take on other employment activity.
- Spouses can work, though children cannot; both can be full-time students.
- E visas are valid for two years, and can be extended in two-year increments indefinitely.
- No annual limit on E-1/E-2 visas.

E-1/E-2 FEE STRUCTURE

E-1/E-2 Nonimmigrant Investment Fee Structure			
Phases	Description	Government Fees	Professional Fees
Phase I Document Preparation	<ul style="list-style-type: none"> • Business Establishment • Business Plan Drafting • Due Diligence and Collect: <ul style="list-style-type: none"> - Investor Supporting Documentation - Source of Fund Documentation 	<ul style="list-style-type: none"> • U.S. Secretary of State Fees (<i>depends on industry</i>) 	<p><u>Legal Fees</u></p> <ul style="list-style-type: none"> • Immigration Legal Fees: \$7,500 - \$10,000 <p>Family Members: \$500 per family member</p> <p>Request For Evidence ("RFE"): \$1000 per request</p>
Phase II E-1/E-2 Petition	<ul style="list-style-type: none"> • U.S. (USCIS) Form I-129 & I-129E Supplement Filing • Home Country (U.S Embassy) 	<ul style="list-style-type: none"> • I-129 Filing \$325 • DS-156 & 157 Filing \$270 • DS-160 Online Application Filing \$140 	<ul style="list-style-type: none"> • Corporate Legal Fees: (Corporate Agreements/ Lease & Sub-Lease): \$4,000-\$6,000
Phase III E-1/E-2 Processing	<ul style="list-style-type: none"> • U.S. Processing (USCIS) Form I-539 to Change Status • Home Country (U.S. Embassy) 	<ul style="list-style-type: none"> • Premium Processing (<i>optional with USCIS only</i>) \$1,225 • Spouse's Employment Authorization (<i>optional</i>) \$380 • I-539 Filing \$290 (<i>per person</i>) 	<p>Corporate Registration and Formation: \$1000</p> <p><u>Investment Fees</u></p> <ul style="list-style-type: none"> • Investment Fees (Business Plan Writer): \$2,000 - \$4,000
<p>*Government Filing Fees (Last update 01/2013): Government filing fees are subject to change. Please visit: http://travel.state.gov & http://www.uscis.gov</p> <p>*Legal Fees: Flat Fee (Does not include translations and other costs).</p> <p>*A detailed breakdown of fees is available upon request.</p>			





TREATY COUNTRIES

Country	Classification
Albania	E-2
Argentina	E-1/E-2
Armenia	E-2
Australia	E-1/E-2
Austria	E-1/E-2
Azerbaijan	E-2
Bahrain	E-2
Bangladesh	E-2
Belgium	E-1/E-2
Bolivia	E-1/E-2
Bosnia and Herzegovina	E-1/E-2
Brunei	E-1
Bulgaria	E-2
Cameroon	E-2
Canada	E-1/E-2
Chile	E-1/E-2
China (Taiwan)	E-1/E-2
Colombia	E-1/E-2
Congo (Brazzaville)	E-2
Congo (Kinshasa)	E-2
Costa Rica	E-1/E-2
Croatia	E-1/E-2
Czech Republic	E-2
Denmark	E-1/E-2
Ecuador	E-2
Egypt	E-2
Estonia	E-1/E-2
Ethiopia	E-1/E-2
Finland	E-1/E-2
France	E-1/E-2
Georgia	E-2
Germany	E-1/E-2
Greece	E-1
Granada	E-2
Honduras	E-1/E-2
Iran	E-1/E-2
Ireland	E-1/E-2
Israel	E-1
Italy	E-1/E-2
Jamaica	E-2
Japan	E-1/E-2
Jordan	E-1/E-2

Country	Classification
Kazakhstan	E-2
Korea (South)	E-1/E-2
Kosovo	E-1/E-2
Kyrgyzstan	E-2
Latvia	E-1/E-2
Liberia	E-1/E-2
Lithuania	E-2
Luxembourg	E-1/E-2
Macedonia (the Former Yugoslav Republic of [FRY])	E-1/E-2
Mexico	E-1/E-2
Moldova	E-2
Mongolia	E-2
Montenegro	E-1/E-2
Morocco	E-2
Netherlands	E-1/E-2
Norway	E-1/E-2
Oman	E-1/E-2
Pakistan	E-1/E-2
Panama	E-2
Paraguay	E-1/E-2
Philippines	E-1/E-2
Poland	E-1/E-2
Romania	E-2
Serbia	E-1/E-2
Senegal	E-2
Singapore	E-1/E-2
Slovak Republic	E-2
Slovenia	E-1/E-2
Spain	E-1/E-2
Sri Lanka	E-2
Suriname	E-1/E-2
Sweden	E-1/E-2
Switzerland	E-1/E-2
Thailand	E-1/E-2
Togo	E-1/E-2
Trinidad & Tobago	E-2
Tunisia	E-2
Turkey	E-1/E-2
Ukraine	E-2
United Kingdom	E-1/E-2
Yugoslavia	E-1/E-2





CHUNG, MALHAS & MANTEL
A PROFESSIONAL LIMITED LIABILITY COMPANY



CHAPTER III
NON-IMMIGRANT
L-1
INTRACOMPANY
TRANSFEREE
VISA

L-1 NON-IMMIGRANT INTRACOMPANY TRANSFEREE

OVERVIEW

L-1 Visa is a non-immigrant visa that allows companies operating in the United States and overseas to transfer certain employees to work for its business in the United States. Two types of L-1 visa classifications are available:

- L-1A visas for managers or executives; and
- L-1B visas for employees with key knowledge of the business's products or processes.

L-2 visa is for the spouse or children of an L-1 visa holder.

Qualification Requirements

Employer:

- Have a qualifying relationship with a foreign company (parent company, branch, subsidiary, or affiliate, collectively referred to as "qualifying organizations"); and
- Currently be, or will be, doing business as an employer in the United States and in at least one other country directly or through a qualifying organization for the duration of the beneficiary's stay in the United States as an L-1. While the business must be viable, there is no requirement that it be engaged in international trade.

Employee:

- Generally have been working for a qualifying organization abroad for one continuous year within the three years immediately preceding his or her admission to the United States; and
- Be seeking to enter the United States to provide service in an executive/managerial* capacity or as an employee with "specialized knowledge" for a branch of the same employer or one of its qualifying organizations.

Branch:

An operating division or office of the same organization housed in a different location.

A U.S. organization with a branch office abroad qualifies, as does a foreign organization with a U.S. branch; however, the branch must be more than simply an agent or representative.

Subsidiary:

A firm, corporation, or other legal entity that is owned by a parent company. Ownership may be direct or indirect. Ownership can be in any of the following forms:

- The parent owns, directly or indirectly, 50% or more of the subsidiary;
- The parent owns, directly or indirectly, 50% of a 50-50 joint venture and has equal control and veto power over the entity; and
- The parent owns, directly or indirectly, less than half of the entity, but in fact controls the entity.

Parent:

- A firm, corporation, or other legal entity which has subsidiaries;
- A foreign parent must own at least 50% of a U.S. subsidiary and have veto powers over the subsidiary's actions;
- A U.S. parent must own at least 50% of the foreign subsidiary and have veto powers over the subsidiary's actions; and
- Affiliate U.S. and foreign companies must each be at least 50% owned by the same ultimate parent.

Affiliate:

- One of two subsidiaries, both of which are owned and controlled by the same parent or individual; or
- One of two legal entities owned and controlled by the same group of individuals, each individual owning and controlling approximately the same share or proportion of each entity.





Restrictions:

- The L-1A visa (manager or executive) is limited to seven consecutive years, and the L-1B visa (specialized knowledge employee) is limited to five consecutive years. The employee is ineligible for L status again until he or she has lived outside the U.S. for a total of one year;
- L -1 Visa Holder must be employed on a full-time basis with the company;
- Generally, L-2 children cannot work while L-2 spouses are permitted to work;
- All L-2 holders can attend schools while maintaining their L-2 status; and
- There is no numerical cap limitation for the L-1 visa.

***Specialized knowledge means either special knowledge possessed by an individual of the petitioning organization's product, service, research, equipment, techniques, management, or other interests and its application in international markets, or an advanced level of knowledge or expertise in the organization's processes and procedures.*

After L-1:

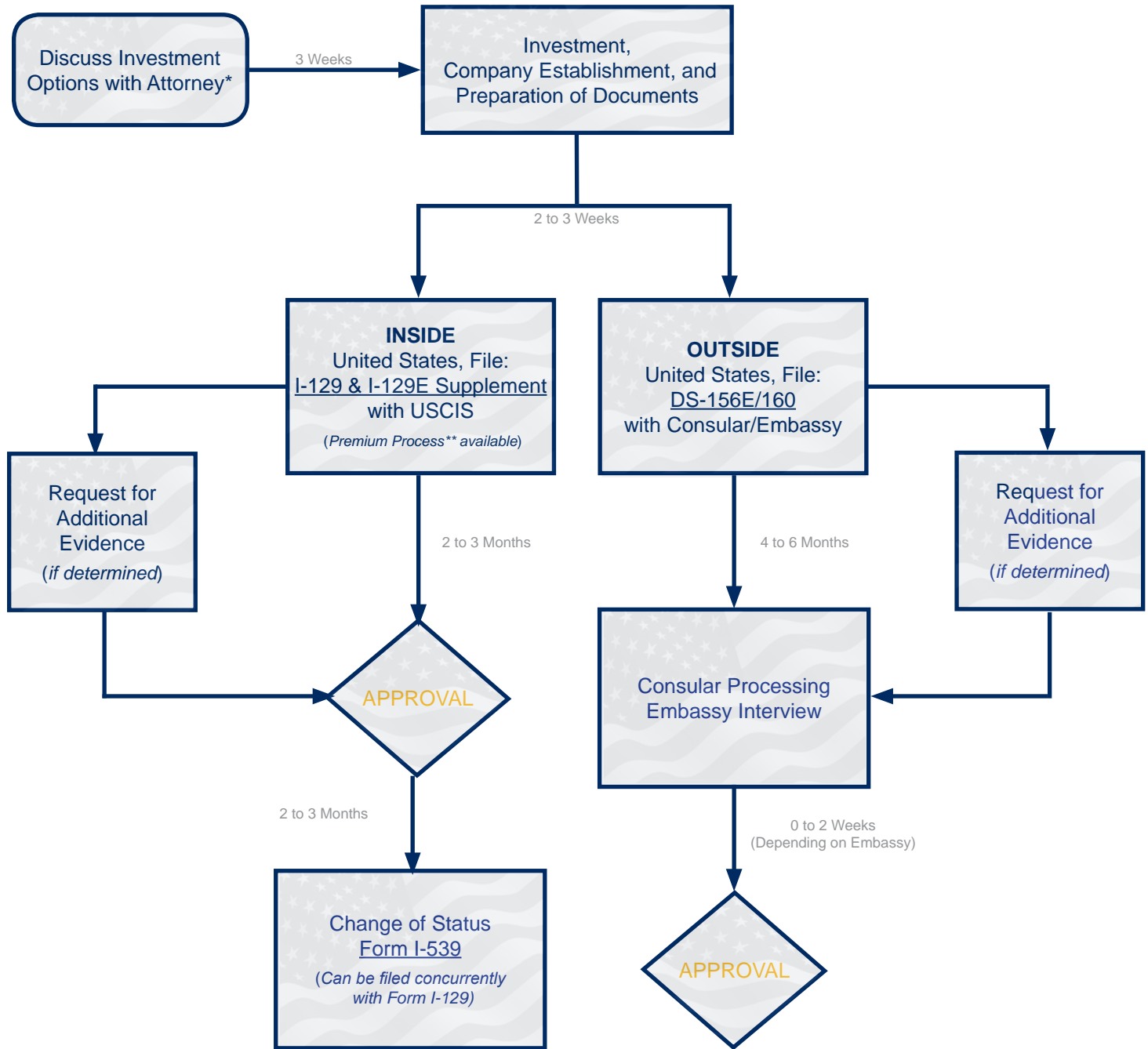
- L-1/L-2 visa holders may be eligible for a green card under the employment-based "first preference" category (EB-1 Multinational Managers and Executives*), if he or she was also a manager or executive abroad; and
- "Specialized knowledge"*** employees may consider transferring to H-1B or apply for a green card under the employment-based "second preference" (EB-2) category.

** Executive capacity generally refers to the employee's ability to make decisions of wide latitude without much oversight.*

** Managerial capacity generally refers to the ability of the employee to supervise and control the work of professional employees and to manage the entire organization or manage a department, subdivision, function, or component of the organization. It may also refer to the employee's ability to manage an essential function of the organization at a high level without direct supervision of others.*



L-1 PROCESS FLOWCHART



*Preliminary Stage

- Identify and Screen Investment
- Complete Investment Questionnaire by Investor
- Sign Retainer Agreement by Investor

**Premium Processing

- \$1,225 to process petition within 15 days.

NOTE: Estimated timeline may vary depending on USCIS processing.



Blanket Petitions

Certain organizations may establish the required intra-company relationship in advance of filing individual L-1 petitions by filing for a blanket petition. Eligibility for blanket L certification may be established if the following criteria are met:

- The petitioner and each of the qualifying organizations are engaged in commercial trade or services;
- The petitioner has an office in the United States which has been doing business for one year or more;
- The petitioner has three or more domestic and foreign branches, subsidiaries, and affiliates; and
- The petitioner, along with the other qualifying organizations, meets one of the following criteria:

- Has obtained at least 10 L-1 approvals during the previous 12-month period;
- Has U.S. subsidiaries or affiliates with combined annual sales of at least \$25 million; or
- Has a U.S. work force of at least 1,000 employees.

The approval of a blanket L-1 visa petition does not guarantee that an employee will be granted L-1A classification. It does, however, provide the employer with the flexibility to transfer eligible employees to the United States quickly and on short notice without having to file an individual petition with USCIS. (Transferee needs only to be employed continuously for 6 months.)

L-1 FEE STRUCTURE

L-1 Intra-Company Transferee Fee Structure			
Phases	Description	Government Fees	Professional Fees
Phase I Document Preparation	<ul style="list-style-type: none"> • Business Establishment • Business Plan Drafting • Due Diligence and Collect: <ul style="list-style-type: none"> - Investor Supporting Documentation - Source of Fund Documentation - Foreign Company and U.S. Company Documentation 	<ul style="list-style-type: none"> • U.S. Secretary of State Fees (<i>dependant on industry</i>) 	Legal Fees <ul style="list-style-type: none"> • Immigration Legal Fees: \$7,500 - \$10,000 Family Members: \$500 per family member Request For Evidence ("RFE"): \$1000 per request
Phase II L-1 Petition	A. U.S. (USCIS) Form I-129 & I-129L Supplement Filing B. Home Country (U.S Embassy)	<ul style="list-style-type: none"> • I-129 Filing \$325 • DS-156 & 157 Filing \$270 • DS-160 Online Application Filing \$140 	<ul style="list-style-type: none"> • Corporate Legal Fees: (Corporate Agreements/ Lease & Sub-Lease): \$4,000-\$6,000 Corporate Registration and Formation: \$1000
Phase III L-1 Processing	A. U.S. Processing (USCIS) Form I-539 to Change Status B. Home Country (U.S. Embassy)	<ul style="list-style-type: none"> • Premium Processing (<i>optional with USCIS only</i>) \$1,225 • Spouse's Employment Authorization (<i>optional</i>) \$380 • I-539 Filing \$290 (per person) 	Investment Fees <ul style="list-style-type: none"> • Investment Fees (Business Plan Writer): \$2,000 - \$4,000
<p>*Government Filing Fees (Last update 01/2013): Government filing fees are subject to change. Please visit: http://travel.state.gov & http://www.uscis.gov</p> <p>*Legal Fees: Flat Fee (Does not include translations and other costs).</p> <p>*A detailed breakdown of fees is available upon request.</p>			







APPENDIX A
COMPARATIVE
TABLES

VISA COMPARISONS

	E-2	L-1	Regional Center EB-5	Individual EB-5
Type	Non-Immigrant Visa	Non-Immigrant Visa	Immigrant Visa Green Card	Immigrant Visa Green Card
Duration	Indefinite while treaty and investment exist.	7-years in increments, start over after being out of the US for 1-year	Conditional for 2-years; then permanent; and US citizenship after	Conditional for 2-years; then permanent; and US citizenship after
Amount of Investment	Any amount, but usually over \$100,000	Any amount	\$500,000 or \$1,000,000	\$500,000 or \$1,000,000
Job Creation	Can be small	Can be small	10 Direct or Indirect Jobs	10 Direct Jobs
Investors' Employment	Manager or essential skills, unless investor	Manager or Specialized Knowledge	Limited Partner of Regional Center	Day to Day Policy Making or Management
Timing	1-3 Months (Premium processing available)	1-2 Months (Premium processing available)	Approximately 1-year	Approximately 1-year
Procedure	Can go direct to consul	USCIS 1st, unless blanket	USCIS, then consul or I-485	USCIS, then consul or I-485
Work Authorized	Spouse Only (90 day application)	Spouse Only (90 day application)	3 Months after I-485	3 Months after I-485
Permanent Residence	Not Available through E-2	Can apply for EB Visas after 1-year	Start Now	Start Now
Attending School	Yes	Yes	In-State Tuition Sooner	In-State Tuition Sooner
Employment Authorization	Immediate	Immediate	Usually 5-9 Months	Usually 5-9 Months
Expedite	Depends on consul or premium processes	Premium Process	No	No
Relevance of Country	Only Treaty Country	Not Relevant	Source and Tracing of Funds Issue	Source and Tracing of Funds Issue
Necessity of Overseas Company	No	Yes	No	No
Acquire Existing Company	Ok	Ok	No	Must Create 10 Additional Jobs
Geographical Area	Any	Any	Rural/High Unemployment for \$500,000	Rural/High Unemployment for \$500,000
Prior Employment Requirement	No	Yes, 1-year	No	No
Initial Length of Visa	2 -years (up to 5-years)	3-years (1 year if creating new office)	2-year Conditional Permanent Residence, then Permanent Residence	2-year Conditional Permanent Residence, then Permanent Residence
Worldwide Taxation (Consult with Professional, information given here is generic)	Yes after 180 days or Average of 120 days per Year over 3-years (check Internal Revenue Code)	Yes after 180 days or Average of 120 days per Year over 3-years (check Internal Revenue Code)	Upon issue of Conditional Green Card	Upon issue of Conditional Green Card





Professional & Legal Fees*				
Investment Categories	<u>Professional Fees</u> (Investment, Economist, Financial)	<u>Legal Fees</u> (Immigration)	<u>Legal Fees</u> (Corporate)	<u>Agencies</u>
<u>EB-5 Direct Investment</u> (New Enterprise or Existing Enterprise)	\$22,000 - \$25,000	\$65,000	\$6,000 - \$10,000	N/A
<u>EB-5 Regional Center</u> (Depending on State & Industry)	N/A	\$65,000	N/A	Regional Center Syndication Fee: \$40,000 - \$50,000 (Includes all Investment, Administrative & Financial) <i>Depending on the Regional Center</i>
E-1/E-2	\$2,000 - \$4,000	\$7,500 - \$10,000 Plus \$500 per family member \$1,000 per RFE Request	\$4,000 - \$6,000	N/A
L-1	\$2,000 - \$4,000	\$7,500 - \$10,000 Plus \$500 per family member \$1,000 per RFE Request	\$4,000 - \$6,000	N/A
<p>*<u>Professional & Legal Fees</u>: Fees are significantly varied depending on complexity of the matter.</p> <p><u>Legal Fees</u>: Flat Fee (Does not include translations and other costs.)</p> <p>A detailed breakdown of fees is available upon request.</p>				





010100100111
11000110
01101010010
01001
0001101010010001010
010010101010101
0100100110001
01000100
01001
010



CHUNG, MALHAS & MANTEL
A PROFESSIONAL LIMITED LIABILITY COMPANY



APPENDIX B

THE FIFTY STATES



ALABAMA



Climate

- Medium Precipitation
- Hot Summers
- Mild Winters

5 Largest Cities

- Birmingham
- Montgomery
- Mobile
- Huntsville
- Tuscaloosa

Top Attractions

- Robert Trent Jones Golf Trail
- U.S. Space & Rocket Center
- Birmingham Zoo
- McWane Science Center
- Barber Motorsports Park
- Gulf Coast Exploreum Science Center
- Montgomery Zoo
- Point Mallard Park

Top 5 Universities

- University of Alabama
- Auburn University
- Samford University
- Troy University
- University of Alabama at Birmingham

Major Industries

- Agriculture
- Mining
- Hydroelectric Power
- Steel Making

Fortune 500 Companies

- Regions Financial Corp.

Alabama is a state of mountains, lakes, caverns, rich forests, sweeping farmland and, on its southern shore, beaches. Rural communities and small towns nestle in the rolling hills, home to bed & breakfasts, museums and antique shops. Also, Alabama was the stage for many key moments of the American civil rights movement in the 1950s and 1960s. Dr. Martin Luther

King Jr. first preached at the Dexter Avenue King Memorial Baptist Church in Montgomery, a National Historic Landmark, and sites commemorating the struggle can be found across the state. Mobile, the capital, is a major seaport. The city is famed for its diverse architecture resulting from English, French and Spanish rule, notably in the Church Street Historic District. There is a real feel of the “Deep South” here, with the old “Southern Charm,” genteel manners, and of course, ice-tea on the veranda.



ALASKA



Climate

- Low to High Precipitation
- Chilly Summers
- Cold Winters

5 Largest Cities

- Anchorage
- Fairbanks
- Juneau
- Sitka
- Ketchikan

Top Attractions

- Alaska Museum of Natural History
- Alaska Cruise
- Kenai Fjords National Park
- Chena Hot Springs
- Denali National Park

Top Universities

- University of Alaska Anchorage
- University of Alaska Fairbanks
- University of Alaska Southeast
- Alaska Pacific University

Major Industries

- Petroleum
- Tourism
- Fishing

Located at the extreme northwest of North America, visitors can enjoy more than 20 hours of sunlight a day from mid-May through to July. With the discovery of gold in Alaska in 1872, thousands of American prospectors and settlers went to Alaska. Alaska now has a broad range of cities, towns and communities that all have unique activities, cultures and attractions. Alaska has an astounding number of parks and public lands that offer outdoor adventures at every turn. Alaska is the United States' largest state, a sparsely populated land of immense natural beauty, diverse wildlife and breathtaking adventure. Anchorage, Alaska's largest city, is both a popular tourist destination and the center of commerce and transportation, but in winter the short days are mostly a pink-and-indigo twilight with about four hours of real daylight.



Perhaps the most important industries in Alaska are fisheries, wood and wood products, furs, and tourism. In 1968, a large oil and gas reservoir near Prudhoe Bay on the Arctic Coast was discovered. The Prudhoe Bay reservoir, with an estimated recoverable 10 billion barrels of oil and 27 trillion cubic feet of gas, is twice as large as any other oil field in North America. The Trans-Alaska pipeline was completed in 1977 at a cost of \$7.7 billion. Oil flows through the 800-mile-long pipeline from Prudhoe Bay to the port of Valdez.



ARIZONA



Climate

- Low Precipitation
- Very Hot Summers
- Mild Winters

5 Largest Cities

- Phoenix
- Tucson
- Mesa
- Chandler
- Glendale

Top Attractions

- Grand Canyon
- Lake Mead National Recreation Area
- Saguaro National Park
- Hoover Dam
- Navajo National Monument

Top 5 Universities

- University of Arizona
- Arizona State University
- Northern Arizona University
- Grand Canyon University
- Thunderbird School of Global Management

Major Industries

- Manufacturing
- Mining
- Tourism

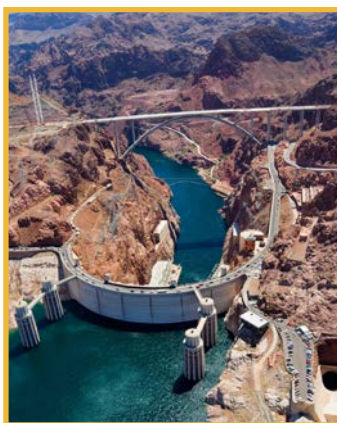
Fortune 500 Companies

- Avnet
- Freeport-McMoRan Copper & Gold
- US Airways Group
- Republic Services
- PetSmart
- Insight Enterprises

Arizona is one of the jewels in the crown of the United States: a wondrous land located in the American Southwest which contains some of the country's most spectacular scenery – and not all if it is desert. Arizona is home to the stunning Grand Canyon and Monument Valley, pine forests, alpine meadows and even snow-capped volcanoes. It also is home to a number of thriving cities, ski resorts and small towns with Old West charm. Phoenix, which enjoys more than 300 sunny days a year, is both the capital and the largest city in the state (and indeed in the Southwest). Although it does get hot, with temperatures often climbing above 100° Fahrenheit (37.78° Celsius), it is a dry heat. There are also some stunning national parks and vibrant cities. Arizona is truly a state that rewards those who dig a little deeper.



Manufacturing has become Arizona's most important industry. Principal products include electrical, communications, and aeronautical items. The state produces over half of the country's copper. Agriculture is also important to the state's economy. Top commodities include cattle and calves, dairy products, and cotton. In 1973 one of the world's most massive dams, the New Cornelia Tailings, was completed near Ajo.



ARKANSAS



Climate

- Medium Precipitation
- Hot Summers
- Cold Winters

5 Largest Cities

- Little Rock
- Fort Smith
- Fayetteville
- Springdale
- Jonesboro

Top Attractions

- Natural State Golf Trail
- Hot Springs National Park
- Alligator Farm and Merman
- Little Rock Tours
- Historic Arkansas Museum

Top 5 Universities

- University of Arkansas
- University of Arkansas at Little Rock
- Hendrix College
- University of Central Arkansas
- Arkansas State University

Major Industries

- Aerospace
- Automotive
- Bio-technology

Fortune 500 Companies

- Wal-Mart Stores
- Tyson Foods
- Murphy Oil
- Dillard's

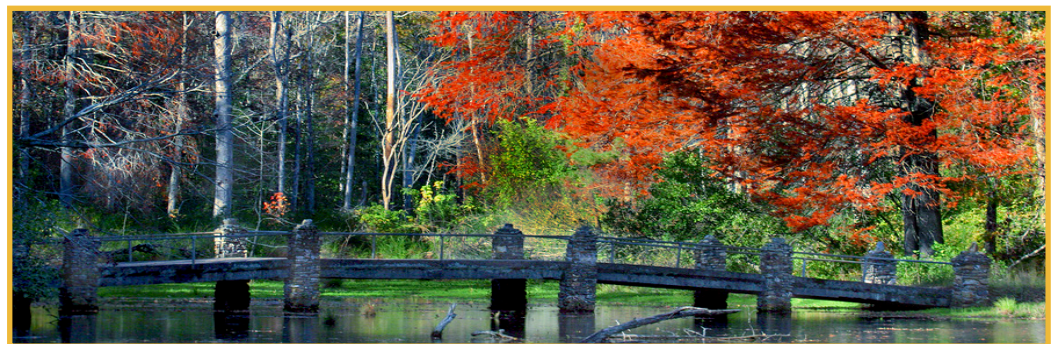
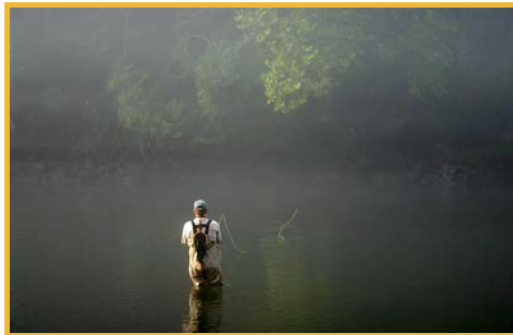
Arkansas has a varied landscape of plains, mountains, forests, rivers, cattle farms, industrial centers and oil wells. Arkansas is a thriving place filled with museums, art exhibitions and parks. The glorious Ozark Mountains stretch from southern Missouri through northern Arkansas. There are 52 state parks within the state that offer a wide range of activities for all. A popular tourist destination is the



Blanchard Springs Caverns, located in Stone County. There are also a number of festivals that draw numerous tourists to this state, including the King Biscuit Blues Festival, Ozark Folk Festival, Toad Suck Daze, and Tontitown Grape Festival.

As for its Industry, food products are the state's largest employing sector, with lumber and wood products a close second. Arkansas is a leader in the production of cotton, rice, and soybeans. Natural gas, oil, crushed stone, bromine, and vanadium are mined in the state. Arkansas also has the country's only active diamond mine. Located near Murfreesboro, it is operated as a tourist attraction. There are four Fortune 500 companies based in Arkansas, including the world's #1 retailer, Wal-Mart.

The 42nd President of the U.S., William Jefferson Clinton, was born and raised in Arkansas, and served as the state's Governor for three terms. There are museums and exhibits dedicated to his life throughout the state.





CALIFORNIA



Climate

- Low to High Precipitation
- Dry Summers
- Mild Winters

5 Largest Cities

- Los Angeles
- San Diego
- San Jose
- San Francisco
- Fresno

Top Attractions

- Hollywood
- Disneyland
- Golden Gate Bridge
- San Diego Zoo
- Alcatraz Island

Top 5 Universities

- Stanford University
- California Institute of Technology
- University of California-Berkeley
- University of California-Los Angeles
- University of Southern California

Major Industries

- Agriculture
- Tourism
- Oil
- Entertainment
- Electronics

Fortune 500 Companies

- Chevron
- Hewlett-Packard
- Apple
- Wells Fargo
- Google
- Walt Disney

California has 53 Fortune 500 Companies.

California has it all: snow-capped mountains, sweeping coastlines, vast deserts, unique wildlife, lush forests and long stretches of golden beach. Beyond all of California's natural beauty is authentic cuisine and world famous family adventure parks (i.e., Disneyland and Universal Studios). The ruggedly beautiful coastline curves north of Los Angeles to San Francisco along the famous Big Sur coastal highway, one of the United States' most scenic drives



and the backdrop to hundreds of classic Hollywood movies. The San Francisco Bay Area is a cosmopolitan city whose cable cars and Golden Gate Bridge are instantly recognizable. Alcatraz looms ominously in the distance, isolated by frigid water and accessible only by ferry. The famous

Prohibition-era gangster Al Capone served time there. Across the bay is the city of Berkeley, a city that largely influenced American culture in the 1960s. California's world-famous wine country extends north of San Francisco into the Napa and Sonoma Valleys. In Los Angeles, the "City of Angels," enjoy beautiful weather year round while celebrity spotting in chic boutiques. Rodeo Drive in Beverly Hills brings the best (and most expensive) fashions from across the globe to one small street. San Diego is home to the largest zoo in the United States.

Leading industries include agriculture, manufacturing (transportation equipment, machinery, and electronic equipment), biotechnology, aerospace-defense, software development and tourism. Silicon Valley is located in this state. Principal natural resources include timber, petroleum, cement, and natural gas.



COLORADO



Climate

- Low to Medium Precipitation
- Wet Spring & Summers
- Dry Winters

5 Largest Cities

- Denver
- Colorado Springs
- Aurora
- Fort Collins
- Lakewood

Top Attractions

- Red Rocks Park & Amphitheatre
- Denver Art Museum
- Denver Museum of Nature & Science
- Denver Zoo
- Denver Botanic Gardens

Top 5 Universities

- University of Colorado at Boulder
- Colorado State University
- University of Denver
- Colorado School of Mines
- University of Colorado Denver

Major Industries

- Agriculture
- Tourism
- Manufacturing

Fortune 500 Companies

- Arrow Electronics
- DISH Network
- Liberty Interactive
- Newmont Mining

Colorado has 9 Fortune 500 Companies.

Many of the residents of Colorado refer to their home state as “God’s country” due to its stunning mountain ranges, enchanting national parks and ancient ruins, lively cities and lavish ski resorts. The State of Colorado is arguably one of the most beautiful in North America. The “Centennial State” is known the world over for the beautiful Rocky Mountain range that runs through it. Seeing it for yourself - whether in the distance while driving its scenic, winding roads, or up close in the spectacular Rocky Mountains National Park - will make you feel that “Rocky Mountain high” that folk singer John Denver so eloquently described. Denver is a delightful metropolis set upon high rolling plains and with a spectacular Rocky Mountain backdrop. Boulder, a trendy city just 38 km (25 miles) northwest of the state capital, boasts a high standard of living for its residents and a renowned university, University of Colorado at Boulder. For those wanting pure luxury,



Aspen is without doubt the place to be. Beloved retreat of A-list celebrities and the ultra-wealthy, Aspen boasts first-class ski resorts, luxurious designer shopping and dining and a beautiful, red-brick downtown area overlooked by the snow capped mountains.

Once primarily a mining and agricultural state, Colorado’s economy is now driven by the service industries, including medical providers and other business and professional services. Colorado’s economy also has a strong manufacturing base. The primary manufactures are food products, printing and publishing, machinery, and electrical instruments. The state is also a communications and transportation hub for the Rocky Mountain region. The farm industry, which is primarily concentrated in livestock, is also an important element of the state’s economy. The primary crops in Colorado are corn, hay, and wheat.





CONNECTICUT



Climate

- Medium Precipitation
- Warm Summers
- Mild Winters

5 Largest Cities

- Bridgeport
- New Haven
- Hartford
- Stamford
- North Stamford

Top Attractions

- Connecticut Shoreline
- Connecticut Science Center
- Connecticut Wine Council Trail
- Mark Twain House
- Philip Johnson's Glass House

Top 5 Universities

- Yale University
- University of Connecticut
- Wesleyan University
- Quinnipiac University
- Central Connecticut State University

Major Industries

- Agriculture
- Insurance
- Tourism

Fortune 500 Companies

- General Electric
- United Technologies
- Aetna
- Xerox
- Cigna
- Hartford Financial Services Group

Connecticut has 14 Fortune 500 Companies

Connecticut is the picturesque southern gateway to New England - a mixture of town, country and quaint coastal villages. Much of the state is comprised of calm colonial villages set in a rural landscape, quietly hiding much of the nation's early history and an abundance of antique stores. Oh yes, most importantly, the coastal metropolis of New Haven has an extraordinary list of firsts, including being the home of the first hamburger



sandwich and the first lollipop. It is also home to Yale University, where some of the most preeminent statesmen and woman have served as U.S. Presidents and Fortune 500 executives.



Today, Connecticut factories produce weapons, sewing machines, jet engines, helicopters, motors, hardware and tools, cutlery, clocks, locks, silverware, and submarines. Hartford has the oldest U.S. newspaper still being published—the Hartford Courant, established 1764—and is the insurance capital of the nation. Connecticut also leads New England in the production of eggs, pears, peaches, and mushrooms, and its oyster crop is the nation's second largest. Poultry and dairy products also account for a large portion of farm income.



DELAWARE



Climate

- Medium Precipitation
- Hot & Humid Summers
- Cold Winters

5 Largest Cities

- Wilmington
- Dover
- Newark
- Bear
- Middletown

Top Attractions

- Kalmar Nyckel Shipyard
- Delaware State House
- Rehoboth Beach
- Delaware State Parks
- Ashland Nature Center

Top 5 Universities

- University of Delaware
- Delaware State University
- Wesley College
- Wilmington University
- Goldey-Beacom College

Major Industries

- Business
- Agriculture
- Manufacturing

Fortune 500 Companies

- DuPont
- SLM

Delaware is the second-smallest state in the United States. Much of the state is rural, with approximately 45 km (28 miles) of coastline. Lewes is a quaint seaside historic town with some delightful beaches. Cape Henlopen State Park is Delaware's largest state park, with its seabird nesting colony and white sand dunes. The administrative and commercial center here is Wilmington.



For many businessmen and lawyers, Delaware is the ideal to incorporate a business due to its well-defined corporate laws and business-friendly tax structure. Consequently, many of the top-rated American corporations are incorporated here.

Delaware's administrative and commercial center is Wilmington. Founded in 1638, it includes museums, galleries, a port and a trolley car system modeled on the world-famous cable cars of San Francisco. In

terms of industry, Delaware's manufactured products include vulcanized fiber, textiles, paper, medical supplies, metal products, machinery, machine tools, and automobiles. Delaware also grows a great variety of fruits and vegetables and is a U.S. pioneer in the food-canning industry. Corn, soybeans, potatoes, and hay are important crops. Delaware's broiler-chicken farms supply the nation's Eastern markets. Fishing and dairy products are also main industries in Delaware.





FLORIDA



Climate

- Medium Precipitation
- Warm & Humid Summers
- Mild Winters

5 Largest Cities

- Jacksonville
- Miami
- Tampa
- Saint Petersburg
- Orlando

Top Attractions

- Walt Disney World
- South Beach
- Florida Keys
- Busch Gardens
- Historic Saint Augustine

Top 5 Universities

- University of Florida
- University of Miami
- Florida State University
- University of South Florida
- University of Central Florida

Major Industries

- Tourism
- Agriculture
- Electronics

Fortune 500 Companies

- World Fuel Services
- Publix Super Markets
- Tech Data
- Jabil Circuit
- NextEra Energy
- AutoNation
- CSX
- Office Depot
- Barden Restaurants
- Winn-Dixie Stores

Florida has 16 Fortune 500 Companies

Florida calls itself the “The Sunshine State.” It is one of the most popular tourist destinations in the world. For families, there is Disneyworld and Universal Studios. For singles and young adults, Miami offers sizzling beaches and world-renown nightlife. Palm Beach represents a more genteel opulence, with storied families like the Kennedys maintaining residences in the area. Further to the south, the Florida Keys archipelago offers tropical climate, beautiful beaches and clear blue waters. It was home of the famous American writer Ernest Hemingway. The Everglades National Park provides adventure seekers with airboat rides and alligator tales. Tucked in among the rolling red clay hills and mossy oak trees of North Florida, the capital of the state, Tallahassee, is a popular university town. Nearby Saint Augustine is the oldest continuously occupied European-established city in the lower 48 states. Florida is a popular place to retire. Pensioners relocate here to take advantage of the beautiful weather, bringing with them their considerable assets. Many services here are tailored to meet the tastes and needs of the elderly.



Florida’s economy rests on a solid base of tourism, manufacturing, and agriculture. Leading the manufacturing sector are electrical equipment and electronics, printing and publishing, transportation equipment, food processing, and machinery. As a result of the arrival of the NASA’s launch facilities on Cape Canaveral (including the Kennedy Space Center) in 1962, Florida has developed a sizable aerospace industry. Oranges, grapefruit, and other citrus fruits are the mainstay of Florida’s agricultural output.



GEORGIA



Climate

- Medium Precipitation
- Hot & Humid Summers
- Mild Winters

5 Largest Cities

- Atlanta
- Columbus
- Savannah
- Athens
- Sandy Springs

Top Attractions

- World of Coca-Cola
- Jekyll Island
- Sea Island Golf Club
- Georgia Aquarium
- Stone Mountain Park

Top 5 Universities

- Georgia Institute of Technology
- Georgia State University
- University of Georgia
- Emory University
- Kennesaw State University

Major Industries

- Textiles
- Timber
- Agriculture

Fortune 500 Companies

- Home Depot
- United Parcel Service
- Coca-Cola
- Delta Air Lines
- Aflac
- Southern
- Genuine Parts
- First Data
- Sun Trust Banks

Georgia has 15 Fortune 500 Companies

The booming city of Atlanta, known as "The City in a Forest," most dramatically expresses the transition from the Old South to the New. Magnolia and dogwood trees still surround handsome Georgian-style homes, yet only blocks away, dazzling contemporary buildings add to Atlanta's ever-growing skyline. Located in southeastern United States, Georgia was founded in 1735 by James Oglethorpe, an Englishman who landed in Savannah and established the 13th colony in the New World. It was a prison colony, but there is full law and order



here now. With farms and orchards in the south, the mysterious Okefenokee Swamp in the southeast and the Atlantic coastline of tidal marshes, there is plenty to see and do. The state is still the home of southern hospitality, gracious homes and a rich history and culture proudly preserved. Atlanta was the setting of the famous Hollywood movie, "Gone with the Wind."



The largest state in the southeast, Georgia is typical of the changing South with an ever-increasing industrial development. Atlanta, the largest city in the state, is the communications and transportation center for the Southeast and the area's chief distributor of goods. Both Coca Cola and CNN News are headquartered in this city.

Georgia leads the nation in the production of paper and board, tufted textile products, and processed chicken. Other major manufactured products are transportation equipment, food products, apparel, chemicals and several minerals.





HAWAII



Climate

- Low to High Precipitation
- Tropical
- Dry Season - April to October
- Wet Season - November to March

5 Largest Cities

- Honolulu
- Pearl City
- Hilo
- Kailua
- Waipahu

Top Attractions

- Hanauma Bay Nature Preserve
- Diamond Head State Monument
- Panaewa Rainforest Zoo
- Garden of the Gods
- Hawaii Volcanoes National Park
- Waikiki Beach
- Waimea Canyon, Kauai
- Haleakala National Park, Maui

Top 5 Universities

- University of Hawaii at Manoa
- Hawaii Pacific University
- University of Hawaii at Hilo
- Chaminade University of Honolulu
- Brigham Young University

Major Industries

- Tourism
- Agriculture

Bestowed with stunning beaches, dramatic mountains, pristine rainforests and a rich cultural heritage, Hawaii exceeds expectations as a tropical paradise. The island group of Hawaii lies approximately 3,860 km (2,400 miles) off mainland United States, comprised of 132 islands and atolls. The state of Hawaii consists of eight islands, of which seven are inhabited and six allow visitors. Honolulu, the capital, sits on the southern shores of Oahu, the most commercialized island, but Hawaii is the largest island. Oahu has two diagonal mountain ranges and many beautiful waterfalls. The islands support rainforest, green flatlands and 13 climatic regions. The tropical paradise of Hawaii



is separated from mainland United States by approximately 3,700 km (2,300 miles) of Pacific Ocean. It has an ethnically diverse population and a rich Polynesian heritage. When Captain James Cook landed here in the 18th century, Oahu had been untouched by the West. It achieved prominence when the volume of Honolulu's commercial

traffic increased and the U.S. Navy acquired rights to Pearl Harbor. December 7, 1941 marked the entry of the United States into WWII, when Japan bombed Pearl Harbor.

The temperature is mild, and cane sugar, pineapple, and flowers and nursery products are the chief products. Hawaii also grows the famous "Kona" coffee bean, bananas, and macadamia nuts. The tourist business is Hawaii's largest source of outside income.



IDAHO



Climate

- Low to Medium Precipitation
- Mild to Hot Summers
- Cold Winters

5 Largest Cities

- Boise
- Nampa
- Meridian
- Idaho Falls
- Pocatello

Top Attractions

- Idaho Golf Trail
- Sun Valley
- Bogus Basin Ski Area
- Bruneau Dunes State Park
- Fishing (various rivers)

Top 5 Universities

- University of Idaho
- Boise State University
- Idaho State University
- Brigham Young University
- Lewis-Clark State College

Major Industries

- Agriculture
- Lumber
- Mining

Fortune 500 Companies

- Micron Technology

Idaho's history is rich in texture, from the early pre-eminence of American Indians to the pioneer fur trappers, miners, loggers, railroad builders and farmers who later settled the territory. This rich heritage can still be discovered today. The state sits on the western side of the continental divide of the Rocky Mountains. Northern Idaho has the greatest concentration of lakes in the western U.S. and evergreen forests abound. Idaho is a haven for outdoor enthusiasts, with 16 alpine ski areas,



over 320 km (200 miles) of groomed Nordic trails, over 11,500 km (7,200 miles) of groomed snowmobile trails, numerous lakes and reservoirs, fishing streams, several dozen state parks and national forests. They also grow potatoes here.

Mining and lumbering have been important for years. Idaho ranks high among the states in silver, antimony, lead, cobalt, garnet, phosphate rock, vanadium, zinc, and mercury. As for agriculture, the state

produces about one fourth of the nation's potato crop, as well as wheat, apples, corn, barley, sugar beets, and hops.

In the 1990s Idaho saw a remarkable growth in the high technology industries, concentrated in the metropolitan Boise area. Moreover, with the growth of winter sports, tourism now outranks other industries in revenue. Idaho's many streams and lakes provide fishing, camping, and boating sites. The nation's largest elk herds draw hunters from all over the world, and the famed Sun Valley resort attracts thousands of visitors to its swimming, golfing, and skiing facilities.





ILLINOIS



Climate

- Medium Precipitation
- Hot & Wet Summers
- Cold & Snowy Winters

5 Largest Cities

- Chicago
- Aurora
- Rockford
- Joliet
- Naperville

Top Attractions

- Sears Tower
- Wrigley Field
- Abraham Lincoln Presidential Library and Museum
- Michigan Avenue Shopping
- Museum of Science and Industry
- Adler Planetarium and Astronomy Museum

Top 5 Universities

- University of Chicago
- Northwestern University
- University of Illinois at Urbana-Champaign
- University of Illinois at Chicago
- Illinois Institute of Technology

Major Industries

- Agriculture
- Cattle
- Manufacturing
- Mining

Fortune 500 Companies

- Archer Daniels Midland
- Walgreen
- Boeing
- McDonald's

Illinois has 32 Fortune 500 Companies

Stretching from Lake Michigan to the Mississippi River, Illinois embraces vast, rich farmlands, the giant city of Chicago, rolling glacial plains and, to the south, the hills and valleys of the Illinois Ozarks. Illinois boasts approximately 6,900 km (4,300 miles) of scenic shoreline, 1,100 historic sites and approximately 200,000 hectares (500,000 acres) of state parks.

Abraham Lincoln, the 16th U.S. president, spent most of his professional (he was a lawyer) and political life here.



Nicknamed the “Windy City,” Chicago is one of the world’s giant trade, industry and transportation centers, and is the birthplace of the modern skyscraper. Chicago



was home to the infamous prohibition-era gangster Al Capone. It was also where the famous economist Milton Friedman developed his economic theory of monetarism. Chicago’s Lake Michigan shoreline is dotted with sandy beaches, hundreds of parks, harbors, zoos and vast expanses of forest reserve. It is one of largest cities in the United States and the commercial hub of the Midwest. The inhabitants in the “Chicagoland” area

speak more than 50 languages. For visitors to the United States, it is the gateway to the cities and farmlands of Illinois, Indiana and the recreational areas of Wisconsin.

Today, Illinois stands high in manufacturing, coal mining, agriculture, and oil production. The state’s manufactures include food and agricultural products, transportation equipment, chemicals, industrial machinery, and computer equipment. The sprawling Chicago district (including a slice of Indiana) is a great iron and steel producer, meat packer, grain exchange, and railroad center.



INDIANA



Climate

- Medium Precipitation
- Warm Summers
- Cool Winters

5 Largest Cities

- Indianapolis
- Fort Wayne
- Evansville
- South Bend
- Hammond

Top Attractions

- Indianapolis 500
- Perfect North Slopes
- Trump Casino
- College Football Hall of Fame
- Indiana Dunes State Park

Top 5 Universities

- Purdue University
- Indiana University Bloomington
- University of Notre Dame
- Indiana State University
- Ball State University

Major Industries

- Agriculture (Corn, Soybeans, Wheat)
- Manufacturing
- Mining (Coal, Limestone)
- Steel Making

Fortune 500 Companies

- WellPoint
- Eli Lilly
- Cummins
- Steel Dynamics
- NiSource
- BrightPoint

Adjoining Lake Michigan to the north, Indiana features deep valleys, cornfields that extend from horizon to horizon, foothills and vast farmlands. The state is home to peaceful Amish communities, covered bridges, and Indian mounds. Standing amid rolling plains is Indianapolis, the state capital and national center for industry, commerce and culture. The business sector lies at the heart of the city; however, many of the tourist attractions are situated on the outskirts. The



city is home to the eponymous Indianapolis Motor Speedway, home of the world-famous Indy 500 motor race.

Indiana is the home of many outstanding institutions of higher learning. Purdue University, Indiana University, and the University of Notre Dame ranked among the top 50 in the United States. Butler, Valparaiso and the University of Evansville are ranked among the top 10 in the Regional University Midwest Rankings.

Indiana's 41-mile Lake Michigan waterfront, one of the world's great industrial centers, turns out iron, steel, and oil. Products include automobile parts and accessories, mobile homes and recreational vehicles, truck and bus bodies, aircraft engines, farm machinery, and fabricated structural steel. Wood office furniture and pharmaceuticals are also manufactured. The state is a leader in agriculture with corn the principal crop. Hogs, soybeans, wheat, oats, rye, tomatoes, onions, and poultry also contribute heavily to Indiana's agricultural output.

Much of the building limestone used in the U.S. is mined in Indiana, which is also a large producer of coal. Other mineral commodities include crushed stone, cement, and sand and gravel.





IOWA



Climate

- Medium Precipitation
- Hot Summers
- Cold Winters
- Wet Springs

5 Largest Cities

- Des Moines
- Cedar Rapids
- Davenport
- Sioux City
- Waterloo

Top Attractions

- Reiman Gardens
- Science Station
- Riverside Theater
- Dutch Windmill
- Blank Park Zoo

Top 5 Universities

- University of Iowa
- Iowa State University
- University of Northern Iowa
- Drake University
- Grinnell College

Major Industries

- Agriculture
- Food Manufacturing
- Insurance

Fortune 500 Companies

- Principal Financial
- Casey's General Stores
- Rockwell Collins

Often referred to as “America’s Heartland,” the easy-going Midwest state of Iowa is characterized by gently undulating fields and plains, dotted with many scenic parks, lakes and recreation areas, such as East Okoboji, West Okoboji (Iowa’s deepest natural lake), Spirit Lake and Clear Lake. Its rich cultural heritage can be seen in the German Amana Colonies, with their many historic sites, museums, and great food. The tulips of Pella reflect the town’s Dutch past and



Des Moines, Iowa’s capital, was clearly named by French explorers. Grant Wood’s famous 20th Century painting “American Gothic” is a painting of an Iowa farmer and his daughter.

Although Iowa produces a tenth of the nation’s food supply, the value of Iowa’s manufactured products is twice that of its agriculture. Major industries

are food and associated products, non-electrical machinery, electrical equipment, printing and publishing, and fabricated products.

Iowa stands in a class by itself as an agricultural state. Its farms sell over \$10 billion worth of crops and livestock annually. Iowa leads the nation in all corn, soybean, and hog marketing, and comes in third in total livestock sales. Iowa’s forests produce hardwood lumber, particularly walnut, and its mineral products include cement, limestone, sand, gravel, gypsum, and coal.

Iowa also has a strong financial and insurance sector. Biotechnology has expanded dramatically in Iowa in the past decade. CNBC’s list of “Top States for Business in 2010” has recognized Iowa as the sixth best state in the nation in which to do business.



KANSAS



Climate

- Low to Medium Precipitation
- Hot & Humid Summers
- Cold Winters

5 Largest Cities

- Wichita
- Overland Park
- Kansas City
- Topeka
- Olathe

Top Attractions

- Kansas History Museum
- Clinton Lake
- Cowtown
- Museum of World Treasures
- Exploration Place

Top 5 Universities

- University of Kansas
- Kansas State University
- Wichita State University
- Emporia State University
- Fort Hays State University

Major Industries

- Agriculture
- Aircraft Manufacturing
- Automotive Manufacturing

Fortune 500 Companies

- Sprint Nextel
- Seaboard
- YRC Worldwide

The geographical center of the United States, the well-known children's novel, *The Wizard of Oz*, begins in Kansas. It was through Kansas that families on the Oregon and Santa Fe trails drove their wagons westwards in search of new homesteads, while cowboys on the Chisholm Trail drove vast herds of longhorns north in search of the railroads. To cater for the new population, cow towns like Abilene and Dodge City were born, and as whites forced Native Americans



to move westwards, fierce battles over land erupted. Later, feuds over Kansas's maintenance of slavery gave rise to the term 'Bleeding Kansas'.



There are numerous national parks and monuments in Kansas, including national historic sites, recreation areas, memorials, reservoirs and rivers offering all kinds of outdoor pursuits. Kansas has played a major role in the history of general aviation, with over 267,000 aircraft being built by dozens of aircraft companies since 1899.

Today, Kansas is a major agricultural area, with vast areas of farmland given to grain crops, beef cattle and buffalo. As highway signs remind travelers, "Every Kansas farmer feeds 75 people - and you!" Oil-well derricks are familiar features of the Kansan landscape. Kansas mines a number of minerals as well. Wichita is one of the nation's leading aircraft-manufacturing centers, ranking first in production of private aircraft. Kansas City is an important transportation, milling, and meatpacking center.





KENTUCKY



Climate

- Medium Precipitation
- Warm & Humid Summers
- Cold Winters

5 Largest Cities

- Lexington-Fayette
- Ironville
- Meads
- Louisville
- Lexington

Top Attractions

- Mammoth Cave National Park
- Louisville/Churchill Downs/
Kentucky Derby
- Kentucky Speedway
- Keeneland
- Louisville Slugger Museum

Top 5 Universities

- University of Kentucky
- University of Louisville
- Northern Kentucky University
- Eastern Kentucky University
- Western Kentucky University

Major Industries

- Agriculture
- Mining
- Manufacturing

Fortune 500 Companies

- Humana
- Yum Brands
- Ashland
- Omnicare
- General Cable
- Kindred Healthcare

Kentucky is best known for horse farms, bourbon distilleries, mountain hollows and moonshine stills, fried chicken (Kentucky Fried Chicken), bluegrass music and the famous Kentucky Derby. Lexington is the horse-breeding center of the United States, and many of its surrounding farms welcome visitors on free tours. General George Rogers Clark founded Louisville in 1778 as a base



from which to harass British troops during the American Revolution. Today, restored historic sites sit side-by-side with modern structures, and visitors can wander through the quaint streets in Old Louisville. The state is a mixture of hundreds of lakes and streams, underground caves, prosperous horse country and poor mining towns nestled in the Appalachian Mountains. Reelfoot Lake, in the northwestern corner of the state, was formed when the Mississippi River flowed backwards during the Madrid Fault earthquake of 1812.



Kentucky prides itself on producing some of the nation's best tobacco, horses, and whiskey. Corn, soybeans, wheat, fruit, hogs, cattle, and dairy products are among the agricultural items produced.

Among the manufactured items produced in the state are motor vehicles, furniture, aluminum ware, brooms, apparel, lumber products, machinery, textiles, and iron and steel products. Kentucky also produces significant amounts of petroleum, natural gas, fluorspar, clay, and stone. However, coal accounts for 85% of the total mineral income.



LOUISIANA



Climate

- Medium Precipitation
- Hot & Humid Summers
- Mild Winters

5 Largest Cities

- New Orleans
- Baton Rouge
- Shreveport
- Metairie Terrace
- Metairie

Top Attractions

- Bourbon Street
- Mardi Gras
- French Quarter
- Red River District
- Swamp Tours
- Nottoway Plantation

Top 5 Universities

- Tulane University
- Louisiana University
- University of Louisiana at Lafayette
- Southeastern Louisiana University
- Louisiana Tech University

Major Industries

- Agriculture
- Oil and Natural Gas
- Fishing

Fortune 500 Companies

- CenturyLink
- Entergy
- Shaw Group

Formerly a colony of both Spain and France, the southern U.S. state of Louisiana is filled with rolling hills and pine forests, vibrant and colorful cities, and murky swamps teeming with alligators. Visitors will likely be wooed by Louisiana's mesmerizing history as well as its sunny weather, plentiful landmarks and activities. Louisiana's largest city, New Orleans, is one of the world's most unique



and captivating metropolises. This lively, jazz-mad, multi-ethnic melting pot is without doubt the major reason that tourists swarm into Louisiana State. The city is famed for its exotic fusion of cultures (Native American, Afro-Caribbean, French and Spanish); its colorful Mardi Gras; its thrilling live jazz, blues, R&B and swaggering swamp rock; its striking French-Creole architecture; its picturesque Mississippi river setting; its sublime and innovative cuisine; and its truly unique French Quarter. The city also boasts museums, galleries and markets galore, marking it out as the truly essential destination for visitors to the state.

Louisiana is a leader in natural gas, salt, petroleum, and sulfur production. Much of the oil and sulfur comes from offshore deposits. The state also produces large crops of sweet potatoes, rice, sugar cane, pecans, soybeans, corn, and cotton. Leading manufactured items include chemicals, processed food, petroleum and coal products, paper, lumber and wood products, transportation equipment, and apparel.





MAINE



Climate

- Medium Precipitation
- Warm & Humid Summers
- Cold & Snowy Winters

5 Largest Cities

- Portland
- Lewiston
- Bangor
- West Scarborough
- South Portland

Top Attractions

- Palace Playland
- Sunset Ridge Golf Course and Sports Park
- Whale Watch
- Acadia National Park
- Desert of Maine

Top 5 Universities

- University of Maine
- University of Southern Maine
- University of Maine at Augusta
- St. Joseph's College
- University of New England

Major Industries

- Agriculture
- Shipbuilding
- Fishing
- Tourism
- Electronics

Little has changed in the state of Maine. Forests and lakes still cover 90% of the land. The approximately 8,530 km (5,300 miles) Maine coastline testifies to two vigorous traditions: fishing and shipbuilding. The landscape is the by-product of massive ice age glacial action, which cut bays, inlets and harbors into the mainland, and left over 2,000 rocky offshore islands. Lobsters are plentiful here, with lobster pots dotting every inlet, and 64 lighthouses guard the state's wildly beautiful coastline. Quaint coastal villages come alive after the winter thaw and tourists flock to enjoy New England charm and hospitality.



Maine's chief industrial products are paper, lumber and wood products, electronic equipment, leather products, food products, textiles, and biotechnology. Naval shipbuilding and construction also remain key components of Maine's economy as well.

Tourism and outdoor recreation are an increasingly important part of Maine's economy. A scenic seacoast, beaches, lakes, mountains, and resorts make Maine a popular vacationland. There are more than 2,500 lakes and 5,000 streams, plus more than 30 state parks to attract hunters, fishermen, skiers, and campers. Maine is ideal for a number of outdoor recreational activities, including snowmobiling, skiing, boating, camping and hiking. In addition, Maine is a popular destination for hunters (particularly those hunting deer, moose and bear), and sport fisherman.



MARYLAND



Climate

- Medium Precipitation
- Hot & Humid Summers
- Mild to Cool Winters

5 Largest Cities

- Baltimore
- Columbia
- Germantown
- Silver Spring
- Waldorf

Top Attractions

- Baltimore Inner Harbor
- Ocean City Boardwalk
- Wisp Resort
- Civil War Driving Tours
- St. Clements Island

Top 5 Universities

- University of John Hopkins
- University of Maryland-College Park
- University of Maryland-University College
- Towson University
- University of Maryland-Baltimore County

Major Industries

- Farming
- Mining
- Fishing

Fortune 500 Companies

- Lockheed Martin
- Constellation Energy
- Marriot International
- Coventry Health Care
- Catalyst Health Solutions
- Host Hotels & Resorts

Founded by Lord Baltimore in 1634, Maryland was one of the original 13 colonies. The Star-Spangled Banner, America's national anthem, was written about the bombardment of Fort McHenry in Baltimore, Maryland, by British ships in 1812.



Maryland's Atlantic Plain, divided by Chesapeake Bay, rises through the rolling hills and scenic farmland of the state's heartland to the Allegheny Mountains of the northwest. Its tourist destinations range from the 16 km (10 miles) of white, sandy beaches at Ocean City to Baltimore's bustling Inner Harbor. Annapolis is home to the United States



Naval Academy, and the Chesapeake the busiest sailing destination on the Eastern Seaboard. It is also one of the ports of call for yachts on the famous Volvo Ocean Race, formerly the Whitbread Round the World Race.

Chesapeake Bay, and the many estuaries and rivers create one of the longest waterfronts in any state. The Bay produces more seafood (oysters, crabs, clams, and finfish) than any comparable body of water. Important agricultural products are greenhouse and nursery products, chickens, dairy products, eggs, and soybeans. Stone, coal, sand, gravel, cement, and clay are the chief mineral products.

Manufacturing industries include food products, chemicals, computer and electronic products, transportation equipment, and primary metals. Baltimore, home of the Johns Hopkins University and Hospital, ranks as the nation's second port in foreign tonnage. The capital, Annapolis, is the site of the U.S. Naval Academy.





MASSACHUSETTS



Climate

- Medium Precipitation
- Warm Summers
- Cold & Snowy Winters

5 Largest Cities

- Boston
- South Boston
- Worcester
- Springfield
- Lowell

Top Attractions

- Plymouth Rock
- Nantasket Beach
- Worcester Art Museum
- Martha's Vineyard
- Historical Buckman Tavern

Top 5 Universities

- Harvard University
- Massachusetts Institute of Technology
- Boston University
- Tufts University
- University of Massachusetts Amherst

Major Industries

- Textiles
- Electronics
- Fishing
- Education
- Tourism

Fortune 500 Companies

- Liberty Mutual Insurance Group
- Staples
- Raytheon
- Massachusetts Mutual Life Insurance
- TJX

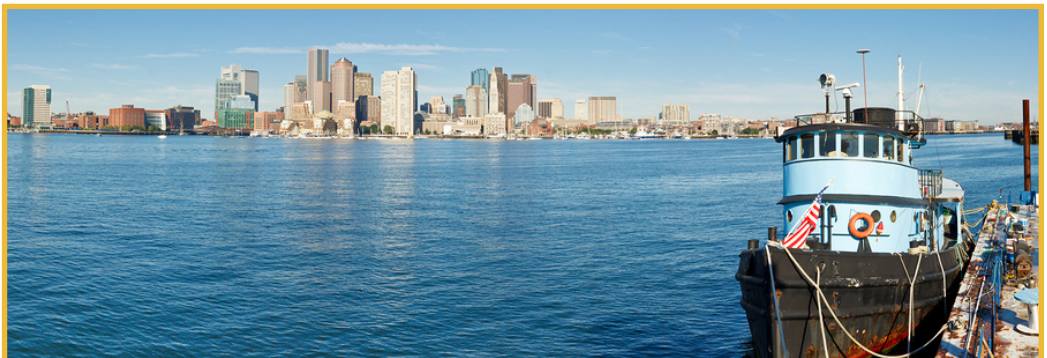
Massachusetts has 11 Fortune 500 Companies

Full of history and diversity, Massachusetts offers everything from cobblestone streets and village greens to space age technology centers. You can explore the nation's early history in this Eastern Seaboard state, tour battleships and lighthouses, catch the excitement of a Boston Red Sox baseball game or be awed by whales drifting along the coastline. Originally settled by the Pilgrims in 1620, Massachusetts is one of the original 13 colonies. Massachusetts has been named by the World Wildlife Fund as one of the world's Top 10 whale-watching spots, with a variety of species of whales found just 40 km (25 miles) off the coast.



two and three respectively in the QS World University Rankings 2011/12), the state of Massachusetts is one of the world's great seats of learning.

Due to its history, numerous recreational areas and historical landmarks, tourism has become an important factor in the state's economy. Boston is the state capital and the cultural center of the state. Cape Cod's beaches, summer theaters, and artists' colony at Provincetown are hot spots for travelers. The Berkshires is the site of Tanglewood, the summer home of the Boston Symphony, art museums, and Jacob's Pillow, a world-renowned dance center. Other popular tourist destinations include Salem and Plymouth.



MICHIGAN



Climate

- Medium Precipitation
- Warm to Hot Summers
- Cold to Very Cold Winters

5 Largest Cities

- Detroit
- Grand Rapids
- Warren
- Sterling Heights
- Lansing

Top Attractions

- Warner Vineyards
- Mackinac Island
- Houghton Lake
- Dinosaur Gardens
- Henry Ford Museum
- Thomas Edison Depot Museum

Top 5 Universities

- University of Michigan
- Michigan State University
- Michigan Technological University
- Wayne State University
- Western Michigan University

Major Industries

- Car Manufacturing
- Farming
- Fishing
- Timber

Fortune 500 Companies

- General Motors
- Ford Motor
- Dow Chemical
- HealthSouth Corp.
- Whirlpool
- TRW Automotive Holding

Michigan has 20 Fortune 500 Companies

Michigan has over 5,149 km (3,200 miles) of shoreline, more lighthouses than any other state and numerous shipwrecks off its coasts. It is a rich and diverse state, ranging from orchards and vineyards to the heavy industry of the big three “Motown” (“Detroit”) motor company giants, Ford, General Motors and Chrysler. The Lower Peninsula, mainly agricultural and industrial, contains inland lakes, meadows and sandy beaches, as well as Detroit. The Upper Peninsula is more rugged, and boasts forests, white beaches, trout streams and winter ski resorts.



While Michigan ranks first among the states in production of motor vehicles and parts, it is also a leader in many other manufacturing and processing lines, including machine tools, airplane parts, refrigerators, hardware, furniture and prepared cereals.

The state produces important amounts of iron, copper, iodine, gypsum, bromine, salt, lime, gravel, and cement. Michigan's farms grow apples, cherries, beans, pears, grapes, potatoes, and sugar beets. Michigan's forests contribute significantly to the state's economy, supporting thousands of jobs in the wood-product, tourism, and recreation industries. With 10,083 inland lakes and approximately 5291 km (3,288 miles) of Great Lakes shoreline, Michigan is a prime area for both commercial and sport fishing.





MINNESOTA



Climate

- Low to Medium Precipitation
- Warm Summers
- Cold & Frigid Winters

5 Largest Cities

- Minneapolis
- Saint Paul
- Rochester
- Duluth
- Bloomington

Top Attractions

- Mall of America
- Heritage House
- Spirit Mountain
- Clements Gardens
- Mount Kato

Top 5 Universities

- University of Minnesota
- Saint Cloud University
- Minnesota State University
- University of Saint Thomas
- Bethel University

Major Industries

- Farming
- Mining

Fortune 500 Companies

- UnitedHealth Group
- Target
- Best Buy
- Supervalu
- 3M
- U.S. Bancorp
- Medtronic
- General Mills
- Land O'Lakes

Minnesota has 19 Fortune 500 Companies

Minnesota, the second-northernmost state in the United States (after Alaska), is one of the nation's leading outdoor tourist destinations, with 68 state parks, 55 state forests and more than 12,000 lakes. Minneapolis and St. Paul are Minnesota's largest cities, colloquially known as the Twin Cities. While Minneapolis is a cosmopolitan and modern city, St. Paul has more of a "small town" character. Both



are culturally rich cities and offer more theatres than any other U.S. metropolitan area outside New York City.

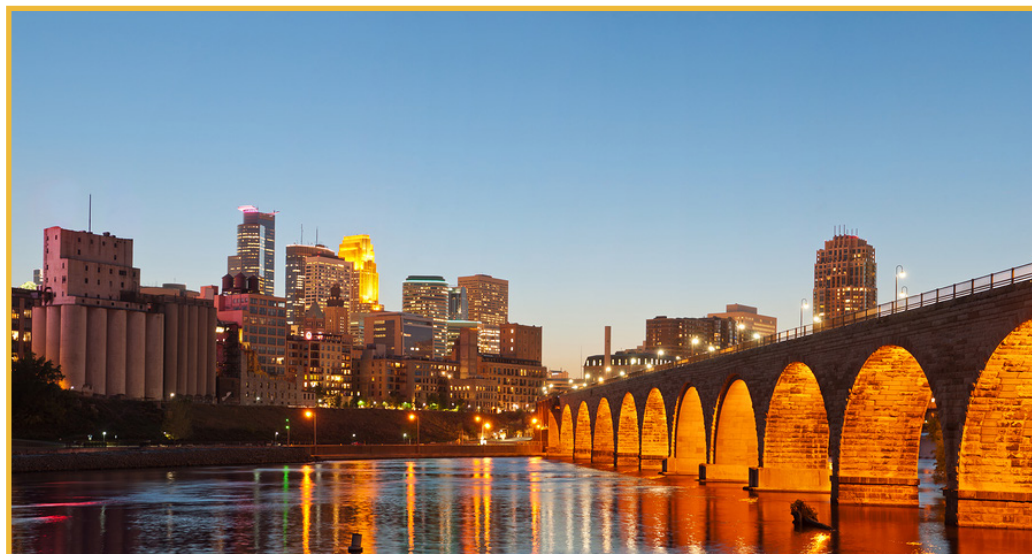


The state is rich in natural resources. The majority of the nation's iron ore is mined here. The state's farms rank high in yields of corn, wheat, rye, alfalfa, and sugar beets. Other leading farm products include butter, eggs, milk, potatoes,

green peas, barley, soybeans, oats, and livestock.

Minnesota's factories produce nonelectrical machinery, fabricated metals, flourmill products, plastics, electronic computers, scientific instruments, and processed foods. The state is also a leader in the printing and paper-products industries.

Tourism is a major revenue producer in Minnesota, with arts, fishing, hunting, water sports, and winter sports bringing in millions of visitors each year.



MISSISSIPPI



Climate

- Medium Precipitation
- Long Humid Summers
- Short Mild Winters

5 Largest Cities

- Jackson
- West Gulfport
- Gulfport
- Southaven
- Hattiesburg

Top Attractions

- Jackson
- Gentle Waters
- St. Mary's Cathedral
- Longwood Plantation
- Redding House
- Natchez Trace Parkway

Top 5 Universities

- Mississippi State University
- University of Mississippi
- University of Southern Mississippi
- Jackson State University
- Belhaven University

Major Industries

- Farming
- Oil
- Textiles
- Fishing

The beautiful “Magnolia State,” named after the river that flows through it, Mississippi is a land of great variety, with wide-open spaces, rolling hills, tall pine forests, white sand beaches, bustling cities, quaint little towns and a real feel of the Deep South. Mississippi is the state where a key battle of the American Civil War was fought

(at Vicksburg in 1863), and Jefferson Davis, the President of the Confederacy, had his plantation there. It is also the state whose geographical beauty and



rich atmosphere have inspired a wealth of artistic talent, from William Faulkner, Eudora Welty and Tennessee Williams, to Elvis Presley, Jimmie Rodgers and BB King. The mighty Mississippi River flanks its western border, while the Gulf of Mexico coastline is a tourist playground and home to artists and nature lovers. Although Mississippi



was one of the states hit hard by Hurricane Katrina in 2005, much of the state's infrastructure and attractions, especially its casinos, have been repaired and are now open to visitors.

Mississippi's economy is balanced among three sectors: agricultural output, legalized gambling and manufacturing. Also, Mississippi remains the world's leading producer of pond-raised catfish.





MISSOURI



Climate

- Medium Precipitation
- Long, Humid & Hot Summers
- Cool to Cold Winters

5 Largest Cities

- Kansas City
- Saint Louis
- Springfield
- Independence
- East Independence

Top Attractions

- Gateway Arch
- Museum of Westward Expansion
- Anheuser-Busch Brewery
- Cameron Cave
- The American Jazz Museum
- Worlds of Fun

Top 5 Universities

- Washington University in St. Louis
- University of Missouri
- University of Missouri-Kansas City
- Saint Louis University
- University of Missouri-St. Louis

Major Industries

- Farming
- Mining

Fortune 500 Companies

- Express Scripts Holdings
- Emerson Electric
- Monsanto
- Reinsurance Group of America
- Peabody Energy
- Ameren

Missouri has 10 Fortune 500 Companies

Missouri, in the heart of the United States, is a blend of frontier west, gracious South, the sophisticated East and industrial North. The Missouri Valley was a major pioneer route, with St. Louis known as “The Gateway to the West.” It is bounded by the Mississippi River in the east, prairies to the north of the Missouri River (the longest in the United States), the Great Plains to the west, rolling hills to the south and the Southern-



style cotton lands to the southeast. St. Louis, the largest city in Missouri and one of America’s largest inland ports, was once a booming center for fur traders and explorers opening up “The West.” It is now a modern communications, commercial, industrial and cultural center. It still retains its love affair with the Mississippi River, on whose banks can be heard ragtime, blues and Dixieland jazz.

Missouri’s economy is highly diversified. Service industries provide more income and jobs than any other segment, and include a growing tourism and travel sector. Wholesale and retail trade, manufacturing, and agriculture also play significant roles in the state’s economy. St. Louis is the home of Budweiser Beer.

Missouri is a leading producer of transportation equipment (including automobile manufacturing and auto parts), beer and beverages, and defense and aerospace technology. Food processing is the state’s fastest-growing industry. Missouri mines produce 90% of the nation’s principal (non-recycled) lead supply. Other natural resources include iron ore, zinc, barite, limestone, and timber. A vibrant wine industry also contributes to the economy.



MONTANA



Climate

- Low to Medium Precipitation
- Warm Summers
- Cold Winters
- Low Humidity

5 Largest Cities

- Billings
- Missoula
- Great Falls
- Bozeman
- Butte

Top Attractions

- Yellowstone and Glacier National Parks
- Big Sky Resort
- Fly Fishing
- Rocky Mountains
- High Bridge

Top 5 Universities

- University of Montana-Missoula
- Montana State University-Bozeman
- Montana State University-Billings
- Montana Tech
- Carroll College

Major Industries

- Farming
- Mining
- Oil
- Lumber
- Tourism

Named after its mountains, Montana is the country's fourth-largest state. It covers approximately 38 million hectares (94 million acres) that were shaped by massive glaciers, scorching heat, molten lava and inland seas. Today almost a quarter of Montana is national forest or public lands, and almost 2 million hectares (5 million acres) are protected as wilderness areas. The state is also a gateway into Yellowstone



National Park. Elk, deer, antelope, wolves and bears are just a few of the 500 species of wildlife that can be seen in Montana.



Much of Montana's early history was concerned with mining, with copper, lead, zinc, silver, coal, and oil as principal products. Butte is the center of the area that once supplied half of the U.S. copper. Fields of grain cover much of Montana's

plains. It ranks high among the states in wheat and barley, with rye, oats, flaxseed, sugar beets, and potatoes as other important crops. Sheep and cattle make significant contributions to the economy.

Tourist attractions include hunting, fishing, skiing, and cowboy ranching. Glacier National Park, on the Continental Divide, has 26 glaciers, 200 lakes, and many streams with good trout fishing.





NEBRASKA



Climate

- Low to Medium Precipitation
- Hot Summers
- Cold Winters

5 Largest Cities

- Omaha
- Lincoln
- Bellevue
- Grand Island
- Kearney

Top Attractions

- Boot Hill
- Mansion on the Hill
- Henry Doorly Zoo
- Junction Motor Speedway
- Platte River

Top 5 Universities

- University of Nebraska-Lincoln
- University of Nebraska at Omaha
- Creighton University
- University of Nebraska at Kearney
- Bellevue University

Major Industries

- Farming

Fortune 500 Companies

- Berkshire Hathaway
- Union Pacific
- ConAgra Foods
- Peter Kiewit Sons'
- Mutual of Omaha Insurance

Nebraska rises from the Missouri prairie lands to the Great Plains and foothills of the Rocky Mountains, still echoing with the footsteps of explorers, pioneers and Plains Indians. Omaha, its largest city set on the west bank of the Missouri River, is one of the state's major tourist destinations. Girls and Boys Town, the famous homeless boys' community, is situated nearby. Originally founded by Father Edward Flanagan



as a home for unwanted and distressed boys, "Boys Town" is still thriving, and today girls also enjoy the care and protection it offers. Lincoln is one of the most stunning state capitals in the United States.



Nebraska is a leading grain-producer with bumper crops of sorghum, corn, and wheat. More varieties of grass, valuable for forage, grow in this state than in any other in the nation. The state's sizable cattle and hog industries make Dakota City and Lexington among the nation's largest meatpacking centers.

Manufacturing has become diversified. Firms making electronic components, auto accessories, pharmaceuticals, and mobile homes have joined such older industries as clothing, farm machinery, chemicals, and transportation equipment. Oil was discovered in 1939 and natural gas in 1949. Berkshire Hathaway, a multinational conglomerate holding company, whose CEO Warren Buffett is one of the richest persons in the world, is headquartered in Omaha. This state is also the home to a number of companies that are major players in their respective sectors, including Mutual of Omaha Insurance Company, ConAgra Foods, and TD Ameritrade.



NEVADA



Climate

- Low Precipitation
- Hot Dry Summers
- Fairly Cold Winters

5 Largest Cities

- Las Vegas
- Henderson
- Reno
- Paradise
- North Las Vegas

Top Attractions

- Las Vegas Strip
- Nevada Golf
- Hoover Dam
- Lake Tahoe
- Lake Mead National Recreation Area
- Great Basin National Park

Top 5 Universities

- University of Nevada-Reno
- University of Nevada-Las Vegas
- College of Southern Nevada
- Great Basin College
- Nevada State College-Henderson

Major Industries

- Tourism
- Mining
- Hydro-Electric Power

Fortune 500 Companies

- Las Vegas Sands
- Ceasars Entertainment
- MGM Resorts International
- Wynn Resorts

Think of Nevada and most likely it's the intoxicating neon lights and notorious debauchery of Las Vegas that come to mind. The world's premier gambling hotspot, Vegas isn't nicknamed "Sin City" for nothing. Recklessly gamble away those dollars in one of the many super casinos on the strip, get married on an impulse or saunter off to a sexy Vegas strip show, always safe in the knowledge that what happens in Vegas stays in Vegas.



Although Las Vegas is undoubtedly the state's main tourist attraction, the state



has much to offer besides the bright lights of the strip. The state's geography ranges from alpine forests to desert terrain. There are numerous parks, recreation areas, and historic sites stretched across Nevada. Red Rock Canyon, located on the outskirts of Las Vegas, offers beautiful natural scenery and opportunities for hiking. The

Valley of Fire State Park contains 3,000-year-old petroglyphs carved in sandstone.

Lake Tahoe is one of the most beautiful lakes in North America, and its winding shores make for a wonderfully scenic drive or hike. Snow falls here in winter, and with over a dozen ski resorts the surrounding peaks of Lake Tahoe make an ideal destination for skiers and snowboarders too.

The state's leading agricultural industry is cattle and calves. Agricultural crops consist mainly of hay, alfalfa seed, barley, wheat, and potatoes. Nevada manufactures gaming equipment; lawn and garden irrigation devices; titanium products; seismic and machinery monitoring devices; and specialty printing.





NEW HAMPSHIRE



Climate

- Medium Precipitation
- Short & Cool Summers
- Long & Cold Winters

5 Largest Cities

- Manchester
- Nashua
- Concord
- East Concord
- Derry Village

Top Attractions

- Mount Monadnock
- Moose Alley
- Loon Mountain
- Anheuser-Busch Brewery
- Conway Scenic Railroad

Top 5 Universities

- Dartmouth College
- University of New Hampshire
- Southern New Hampshire University
- Plymouth State University
- Keene State College

Major Industries

- Textiles
- Lumber
- Tourism

Located in the northeast United States, New Hampshire is noted for its scenic beauty, from Mount Washington in the northern White Mountains, to the ocean beaches near Hampton. The state is nicknamed the “Granite State,” and is sometimes referred to as the “Mother of Rivers,” as five of the great streams of New England



originate in its granite hills. The state is full of natural wonders: lush forests, majestic mountain ranges, major rivers, beautiful lakes, and peculiar rock and tree formations. The state’s famous and rousing motto, “Live Free or Die,” reminds modern visitors of New Hampshire’s participation in the nation’s Revolutionary War.



New Hampshire is also the stage for numerous seasonal festivals. Whether it’s gathering maple syrup from trees in the spring, known as “sugaring-off,” its numerous county fairs in summer and early fall, the New Hampshire

Highland Games in autumn, or skiing, snowmobiling and ice fishing in the winter, New Hampshire has something of interest for everyone.

Abundant waterpower turned New Hampshire into an industrial state early on, and manufacturing is still the state’s principal source of income. The most important industrial products are electrical and other machinery, textiles, pulp and paper products, and stone and clay products. Dairy and poultry, and growing fruit, truck vegetables, corn, potatoes, and hay are the major agricultural pursuits. Tourism is also a major part of New Hampshire’s economy, adding more than \$3.5 billion into the state annually.



NEW JERSEY



Climate

- Medium Precipitation
- Warm & Humid Summers
- Cold Winters

5 Largest Cities

- Newark
- Jersey City
- Paterson
- Elizabeth
- Edison

Top Attractions

- Atlantic City
- Cape May
- Six Flags Great Escape and Wild Safari
- Wildwood
- Liberty State Park

Top 5 Universities

- Princeton University
- Rutgers
- Stevens Institute of Technology
- New Jersey Institute of Technology
- Montclair State University

Major Industries

- Farming
- Chemical
- Pharmaceuticals
- Insurance
- Tourism

Fortune 500 Companies

- Medco Health Solutions
- Johnson & Johnson
- Prudential Financial
- Honeywell International
- Toys "R" Us

New Jersey has 21 Fortune 500 Companies

One of the original 13 colonies and within driving distance to New York City, New Jersey presents a visitor with a microcosm of the United States. One of the Mid-Atlantic States, New Jersey features plenty of rolling countryside and natural parkland set amidst mountains, lakes and forests. The most densely populated of the 50 United States, New Jersey is also the third wealthiest state in the United States.



New Jersey is the home of beautiful beaches, exciting nightlife and many award-winning cultural attractions. While sections of the state such as Atlantic City and the Jersey Shore are world-renowned, there is also a wealth of lesser known historic landmarks and cultural centers. Over the years, artists from New Jersey have set cultural trends for the rest of the nation: Frank Sinatra, Count Basie, Bruce Springsteen and Whitney Houston are among this state's famous sons and daughters.



New Jersey is also the home of over 20 Fortune 500 companies. Its major industries involve pharmaceuticals, finance, chemical development and telecommunications. New Jersey produces a huge volume of agricultural products and commodities. Oil refineries are located in northern New Jersey.

Tourism is also a major industry in New Jersey, and the state's main attraction is unquestionably Atlantic City, home of the famous Atlantic City Boardwalk, the longest boardwalk in the world, and numerous world-famous casinos.



NEW MEXICO



Climate

- Low Precipitation
- Hot Summers
- Cold Winters

5 Largest Cities

- Albuquerque
- Las Cruces
- Rio Rancho
- Enchanted Hills
- Santa Fe

Top Attractions

- International UFO Museum and Research Center
- Gila Cliff Dwellings National Monument
- Chaco Canyon National Historic Park
- White Sands National Monument
- Slaughter Canyon Cave

Top 5 Universities

- University of New Mexico
- New Mexico State University
- Eastern New Mexico University
- New Mexico Highlands University
- Western New Mexico University

Major Industries

- Mining (Potash, Copper, Silver)
- Oil
- Natural Gas
- Tourism

Breathtaking desert sunsets, wide-open plains, imposing mountain ranges, lush green forests and gargantuan caverns, the state of New Mexico in the American Southwest boasts them all, and much more besides. Nicknamed “the land of enchantment,” the sparsely populated state of New Mexico manages to live up to that



lofty appellation with its spectacular topography and fascinating history and culture, much of which is wholly unique to the state.



The Pueblo and Navajo Native American and Spanish cultures of New Mexico are still very much living and breathing cultures in the state. Albuquerque straddles the Rio Grand River and is the largest city in the state. It is a colorful metropolis

renowned as the ballooning capital of the world. It is a fashionable and lively city famous for its art and a music scene, its historic district Old Town, and its museums and cultural centers. Santa Fe, with its distinctive and earthy adobe architecture, is renowned for its sophistication and artistic vision. The city is host to numerous festivals and cultural events each year.

New Mexico is a leader in energy research and development in the nuclear, solar, and geothermal areas. Minerals are the state’s richest natural resource. The principal manufacturing industries include food products, chemicals, transportation equipment, lumber, electrical machinery, and stone-clay-glass products.



NEW YORK



Climate

- Medium Precipitation
- Mild Summers
- Very Cold Winters

5 Largest Cities

- New York City
- Brooklyn
- Manhattan
- Borough of Bronx
- Staten Island

Top Attractions

- Statue of Liberty
- Niagara Falls
- Empire State Building
- Montauk Point Lighthouse
- Adirondack Park

Top 5 Universities

- Columbia University
- Cornell University
- New York University
- University of Rochester
- Rensselaer Polytechnic Institute

Major Industries

- Finance
- Communications
- International Trade
- Publishing
- Fashion
- Tourism

Fortune 500 Companies

- Verizon Communications
- J.P. Morgan Chase & Co.
- International Business Machines
- Citigroup
- INTL FCStone

New York has 50 Fortune 500 Companies

There is only one New York City. The Yankees, Coney Island, Central Park, The Metropolitan Opera and Ballet, Broadway, and the Statue of Liberty: who has not heard of these New York institutions? This great metropolis is the nerve center of the nation with internationally renowned museums, fashion and cuisine. It is a leader in

manufacturing, foreign trade, commerce and banking, law, book and magazine publishing, and theatrical production. New York is also home to the New York Stock Exchange, the largest stock exchange in the world. New York City is home for people from nearly all cultures and backgrounds, and is the home of the headquarters of the United Nations.



In and around New York City are world-class beaches and seascapes. The Hamptons, playground of the rich and famous, competes in glamour with the French Riviera. If one looks a little further outside of the city, and within a day's drive or less, visitors can find fine quiet, forested mountains, quaint, small towns, and plenty of historical sightseeing. The city of Buffalo is the birthplace of the Buffalo Chicken Wing. The beautiful Saratoga Race Course in Saratoga Springs is a Thoroughbred horse racing track featured in the Hollywood film Seabiscuit and one part of the Triple Crown.

New York State has over 200 state and national parks, as well as numerous historic sites. Greater Niagara, known for the thundering Niagara Falls that straddle New York and Ontario, Canada, attracts millions upon millions of visitors every year.





NORTH CAROLINA



Climate

- Medium Precipitation
- Mild Summers
- Mild Winters

5 Largest Cities

- Charlotte
- Raleigh
- West Raleigh
- Greensboro
- Winston-Salem

Top Attractions

- Charlotte Museums
- The NC Art Museum
- The Battleship North Carolina
- Carowinds Amusement Park
- Great Smoky Mountains National Park

Top 5 Universities

- Duke University
- University of North Carolina-Chapel Hill
- Wake Forest University
- North Carolina State University
- East Carolina University

Major Industries

- Farming (Tobacco, Poultry)
- Textiles
- Furniture

Fortune 500 Companies

- Bank of America Corp.
- Lowe's
- Nucor
- Duke Energy
- Reynolds American
- Goodrich

North Carolina has 14 Fortune 500 Companies

In 1903, Wilbur and Orville Wright built and flew the first powered airplane from Kitty Hawk, North Carolina. Natural attractions in North Carolina range from sandy beaches of the low-lying Outer Banks in the east to high mountain ranges in the west. Fringed by 480 km (300 miles) of beaches, islands and inlets, the North Carolina



coast is renowned for its fishing, boating and other recreational opportunities. The Heartland, often referred to as "the Piedmont", is composed of gently rolling plains



that host picturesque golf courses, lakes and farmland, as well as the state's largest urban areas. Charlotte, the state's largest city, is a thriving convention and entertainment center. The Outer Banks Barrier Islands along the coast include resorts, fishing villages and stretches of national seashore. Cape Hatteras National Seashore also boasts areas of undeveloped beach. Two ranges of the southern Appalachians are located in Western North Carolina: the majestic Blue Ridge Mountains and Great Smoky Mountains.

North Carolina's economy is experiencing a shift away from tobacco, furniture and textiles to knowledge-based enterprises such as biotechnology, software development, pharmaceuticals, and life sciences. The state was ranked third best state for business in 2010 by Forbes magazine. The major agricultural products are tobacco, corn, cotton, hay, peanuts, and vegetable crops. The state is the country's leading producer of mica and lithium.

Tourism is also important, with visitors spending more than \$1 billion annually. Sports include year-round golfing, skiing at mountain resorts, both fresh- and salt-water fishing, and hunting.



NORTH DAKOTA



Climate

- Low Precipitation
- Hot Summers
- Very Cold Winters

5 Largest Cities

- Fargo
- Bismarck
- Grand Forks
- Minot
- West Fargo

Top Attractions

- Fort Mandan Overlook State Historic Site
- Ralph Engelstad Arena
- Mahh Dahh Hey Trail
- International Peace Garden
- Rendezvous Region Backway

Top 5 Universities

- University of North Dakota
- North Dakota State University
- Minot State University
- University of Mary
- Dickinson State University

Major Industries

- Farming (Wheat, Barley, Flaxseed)
- Cattle
- Mining (Lignite, Soft Coal)
- Electrical Power Generation

North Dakota, one of the most rural states in the United States, is famous for its scenery and Old West heritage. Visitors can enjoy the western experience and pick up the trail of some of America's greatest legends, like Lewis and Clark, Sakakawea, Theodore Roosevelt, Custer and Sitting Bull.



These Northern Plains saw the passing of the big game hunting native cultures when fur traders and explorers opened up routes westward to the Pacific Ocean.



North Dakota is now famous among outdoor adventurers for its world-class walleye and perch fishing, plus unbeatable upland game, waterfowl and big game.

More than 90% of North Dakota's land is made up of farmland. North Dakota ranks first in the nation's production of spring and durum wheat; other agricultural products include barley,

rye, sunflowers, dry edible beans, honey, oats, flaxseed, sugar beets, hay, beef cattle, sheep, and hogs.

Recently, manufacturing industries have grown, especially food processing and farm equipment. The state's coal and oil reserves are plentiful, and in recent years North Dakota has witnessed a natural gas and oil boom that is only gaining momentum. The state also produces natural gas, lignite, clay, sand, and gravel. The Garrison Dam on the Missouri River provides extensive irrigation and produces 400,000 kilowatts of electricity for the Missouri Basin areas. Known for its waterfowl, grouse, pheasant, and deer hunting and bass, trout, and pike fishing, North Dakota has 20 state parks and recreation areas.





OHIO



Climate

- Medium Precipitation
- Hot Summers
- Mild Winters

5 Largest Cities

- Columbus
- Cleveland
- Cincinnati
- Toledo
- Akron

Top Attractions

- Cedar Point Amusement Park
- Rock and Roll Hall of Fame and Museum
- Amish Country
- Ohio State Buckeyes
- Pro Football Hall of Fame

Top 5 Universities

- Case Western Reserve University
- Ohio State University-Columbus
- Miami University-Oxford
- Ohio University
- University of Dayton

Major Industries

- Manufacturing (Steel, Cars, Aircraft Rubber Products, Chemicals, Plastics)
- Farming
- Mining (Coal)

Fortune 500 Companies

- Cardinal Health
- Kroger
- Procter & Gamble
- Marathon Petroleum
- Macy's

Ohio has 28 Fortune 500 Companies

The Midwestern State of Ohio is known for its pastoral beauty and bountiful farmland. Ohio boasts a unique combination of the pastoral and the urban metropolis; whatever your taste, countless adventures await any visitor to this state.



Columbus, the state capital and also the largest city in the state, is a city with plenty to offer any visitor. Snack on traditional German treats as you tour Schiller Park in German Village, scene of open-air Shakespeare performances throughout the summer. Trendy visitors should check out the Short North Arts District, home to chic art galleries and edgy fashion boutiques.



Tourism is a major industry in this state. Cleveland, site of the first major rock and roll concert in 1952, is the fitting home to The Rock and Roll Hall of Fame, one of Ohio's biggest tourist attractions. The Rock and Roll Hall of Fame is a popular destination for not only Ohio residents, but for rock fans worldwide.

The famous American industrialist John D. Rockefeller built the Standard Oil Company in this state, and the state remains one of the nation's industrial leaders to this day. Steel; rubber; roller bearings; jet engines and machine tools; and auto assembly, auto parts are just some of the products produced in here. The state's fertile soil produces an abundance of cash crops. Dairy farming and sheep and hogs are also important commodities to the state's economy.



OKLAHOMA



Climate

- Medium Precipitation
- Hot Summers
- Mild Winters

5 Largest Cities

- Oklahoma City
- Tulsa
- Norman
- Broken Arrow
- Lawton

Top Attractions

- Oklahoma City
- Oklahoma City National Memorial
- Oklahoma City Zoo
- Myriad Botanical Gardens
- Heller Theater

Top 5 Universities

- University of Tulsa
- University of Oklahoma
- Oklahoma State University
- University of Central Oklahoma
- Northeastern State University

Major Industries

- Farming (Wheat, Cattle)
- Oil
- Natural Gas

Fortune 500 Companies

- Oneok
- Chesapeake Energy
- Devon Energy
- Williams

Located in the South Central region of the United States, it is known informally by its nickname, "The Sooner State." Most of Oklahoma lies in the Great Plains and the U.S. Interior Highlands. The state contains some small mountain ranges and extensive prairie lands and forests. Oklahoma has over 50 state and national parks, as well as a number of wildlife preserves and conservation areas. The state boasts 11



different ecological regions, from the Rocky Mountain foothills to cypress swamps, tall grass prairies, hardwood and pine forests, and over 200 lakes. Oklahoma is home to more Native American tribes than any other state except California, with 39 tribal headquarters and members of at least 67 tribes. Today, visitors will find Native American art galleries, museums, historic sites, pow wows, dances and festivals.

Oil made Oklahoma a rich state, but natural-gas production has now surpassed it. Oil refining, meatpacking, food processing, and machinery manufacturing (especially construction and oil equipment) are important industries. Minerals produced in Oklahoma include helium, gypsum, zinc, cement, coal, copper, and silver. Oklahoma's rich plains produce bumper yields of wheat, as well as large crops of sorghum, hay, cotton, and peanuts. More than half of Oklahoma's annual farm receipts are derived from livestock products, including cattle, dairy products, swine, and broilers (chickens bred for meat production).





OREGON



Climate

- Medium to High Precipitation
- Mild Summers
- Mild to Cold Winters

5 Largest Cities

- Portland
- Eugene
- Salem
- Gresham
- Hillsboro

Top Attractions

- Oregon Shakespeare Festival
- Oregon Coast Aquarium
- Cottage Grove
- The Rogue River
- Mt. Bachelor

Top 5 Universities

- University of Oregon
- Portland State University
- Oregon State University
- Southern Oregon University
- Western Oregon University

Major Industries

- Timber
- Paper Products
- Farming (Wheat, Cattle)
- Mining (Coal)
- Computer Equipment
- Electronics

Fortune 500 Companies

- Nike
- Precision Castparts

Located in the Pacific Northwest, between California and Washington, visitors are drawn to the scenic beauty of Oregon, which combines historic towns, sleepy fishing villages, ski resorts and wineries. The state's landscape is rich in natural beauty and diversity, with spectacular coastline and mountains, and



beautiful lakes, rivers, streams, deserts, volcanoes, deserts and forests. Nearly half the state is forested. Weather moves eastwards from the ocean across the Willamette Lowlands to the rugged Cascade Mountains, soaring to the highest peak of Mt Hood, at 3,353m (11,239ft), where cold, moist air dumps heavy snowfalls. East of the Cascades, the state's agriculture flourishes on the drier Columbia Plateau. Portland, the state's most populous city, features a number of attractions for any visitor, including inviting parks and gardens, a thriving music and art scene, shopping and fine eateries.

Oregon has a thriving agricultural sector, producing numerous greenhouse and nursery products. With the low-cost electric power provided by dams, Oregon has developed steadily as a manufacturing state as well.



PENNSYLVANIA



Climate

- Medium Precipitation
- Mild Summers
- Very Cold Winters

5 Largest Cities

- Philadelphia
- Pittsburgh
- Allentown
- Erie
- Reading

Top Attractions

- Hershey Park
- Dorney Park
- Sesame Place
- Kennywood Park
- Lancaster Amish Country

Top 5 Universities

- University of Pennsylvania
- Carnegie Mellon University
- Lehigh University
- Pennsylvania State University-University Park
- University of Pittsburgh

Major Industries

- Steel
- Farming (Corn, Oats, Mushrooms)
- Mining (Iron, Cement, Stone)
- Electronics Equipment
- Cars
- Pharmaceuticals

Fortune 500 Companies

- Amerisource Bergen
- Comcast
- Sunoco
- Rite Aid
- United States Steel

Pennsylvania has 23 Fortune 500 Companies

Leafy Pennsylvania boasts vast forests, pretty parks and glinting lakes, along with thousands of miles of rivers and streams. In the fall, Pennsylvania's forests blaze with autumnal colors, and winding roads pass through quaint historic towns and numerous covered bridges. The state is also something of a cultural Mecca, with many world-



class museums and a rich mix of cultural and ethnic communities. In addition to its eye-catching countryside, Pennsylvania is steeped in colorful history. The Declaration of Independence and the Constitution were both signed in Philadelphia, and is home to the Liberty Bell.



Philadelphia is the setting of the Hollywood movie Rocky. Pittsburgh is home to the famous Pittsburgh Steelers football team. The Barnes Foundation, located on Philadelphia's "main line" hosts one

of North America's largest collections of Impressionist paintings.

Pennsylvania's 63,200 farms are the backbone of the state's economy, producing a wide variety of cash crops. Pennsylvania still leads the nation in the production of specialty steel. The service, retail trade, and manufacturing sectors provide the most jobs. Pennsylvania is a leader in the production of chemicals and pharmaceuticals, food products, and electronic equipment.

Taking full advantage of the discovery of the Marcellus Shale gas formation, one of the largest shale regions in the United States and estimated to be the second largest natural gas find in the world, Pennsylvania's natural gas industry has boomed in recent years, making the oil and gas sector a major source of funds and job creation in the state.



RHODE ISLAND



Climate

- Medium Precipitation
- Mild Summers
- Very Cold Winters

5 Largest Cities

- Providence
- Warwick
- Cranston
- Pawtucket
- East Providence

Top Attractions

- Block Island
- JVC Jazz Festival
- Bristol 4th of July Parade
- Brown University
- University of Rhode Island

Top 5 Universities

- Brown University
- University of Rhode Island
- Johnson & Wales University
- Rhode Island College
- Providence College

Major Industries

- Textiles
- Jewelry
- Rubber Products
- Machinery
- Tourism

Fortune 500 Companies

- CVS Caremark
- Textron

It may take just 45 minutes to drive from one end of Rhode Island to the other, but this tiny state offers more than its fair share of broad sandy beaches, green parks, vibrant cities and a wealth of historic attractions. One of the original 13 colonies, Rhode Island's size has never deterred the state from making some ground-breaking political decisions: it was the first state to declare independence from Great Britain on 4 May 1776; and it was the first, in 1774, to pass laws against slavery.



Rhode Island's capital city, Providence, underwent a major facelift in the 1990s, and has since experienced something of a renaissance. Visitors will now find the city lined with beautifully landscaped pedestrian walkways and Venetian-style footbridges. For those looking for some seaside activities, top sailing spot Newport is an all-seasons resort, offering an attractive harbor that is rich in colonial history and in easy reach of bone-white beaches.

Rhode Island, smallest of the 50 states, is densely populated and highly industrialized. It is a major center for jewelry manufacturing. Electronics, metal, plastic products, and boat and ship construction are other important industries. Non-manufacturing employment includes research in health, medicine, and the ocean environment. Providence is a wholesale distribution center for New England. Fishing ports are at Galilee and Newport. The states rural areas support small-scale farming, including grapes for local wineries, turf grass, and nursery stock. Tourism generates more than a billion dollars a year in revenue.



SOUTH CAROLINA



Climate

- Medium Precipitation
- Hot Summers
- Mild Winters

5 Largest Cities

- Columbia
- Charleston
- North Charleston
- Mount Pleasant
- Rock Hill

Top Attractions

- Historic Charleston
- Heritage Corridor Region 3 Discovery Center
- Myrtle Beach
- Myrtle Beach Pavilion Amusement Park
- Wild Water-Water and Race Theme Park

Top 5 Universities

- Clemson University
- University of South Carolina-Columbia
- College of Charleston
- Coastal Carolina University
- Winthrop University

Major Industries

- Farming (Tobacco, Soybean)
- Textiles
- Manufacturing Chemicals
- Machinery
- Electronics
- Paper Products

Fortune 500 Companies

- Domtar

The state's beautiful scenery extends from the rolling hills of the Upcountry to the glistening lakes of the midlands and the wide, white sandy beaches of the Atlantic coastline. The South Carolina has a rich history documented by attractive plantations and the northwestern foothills, where fierce battles were fought during the Civil War. Charleston, situated on South Carolina's coast, is a popular tourist destination. Myrtle Beach, a popular resort city famous for its golf, is centered on



a sun-drenched stretch of coastline on the northern border. Hilton Head, a resort town located on a narrow, barrier island, is generously clad with beautiful beaches and unspoiled forests, and world-class golf courses, tennis resorts.

Once primarily agricultural, South Carolina today has many large textile and other mills that produce several

times the output of its farms in cash value. Charleston makes asbestos, wood, pulp, steel products, chemicals, machinery, and apparel.

Farms have become fewer but larger in recent years. South Carolina ranks second in peach production after California. Other top agricultural commodities include broilers, turkeys, greenhouse products, cattle and calves, and corn. One of only two commercial tea plantations in America lies approximately 32 km (20 miles) south of Charleston on Wadmalaw Island.



SOUTH DAKOTA



Climate

- Low Precipitation
- Hot Summers
- Very Cold Winters

5 Largest Cities

- Sioux Falls
- Rapid City
- Aberdeen
- Brookings
- Watertown

Top Attractions

- Mount Rushmore
- Crazy Horse Memorial
- Rapid City
- Adams Museum
- Boothill Tours

Top 5 Universities

- South Dakota State University
- University of South Dakota
- Black Hills State University
- Northern State University
- Dakota State University

Major Industries

- Retail
- Manufacturing
- Farming (Hay, Sunflowers, Honey)
- Tourism

Tucked into the heart of the United States, South Dakota overflows with natural wonders. Offering untouched nature in abundance, vast stretches of fertile prairies and early pioneer towns, the visitor cannot be but overwhelmed by this states splendor. Near the eastern border, Sioux Falls is the largest city in the region, and boasts its namesake waterfall. On the opposite side of the state, Rapid City is the gateway to



the Black Hills, which contain truly awe-inspiring mountains, caves, forests and lakes. In South Dakota's southwest is Badlands National Park, a panorama of natural beauty brought on by land erosion. Also in the southwest is the state's best-known tourist attraction, the Mount Rushmore National Memorial, where the 18 meter- (60 foot-) high heads of four U.S. presidents (George Washington, Thomas Jefferson, Theodore Roosevelt and Abraham Lincoln) have been blasted and carved out of the mountain. In the Black Hills, the still incomplete Crazy Horse Memorial is the world's largest mountain sculpture.

Agriculture is a cultural and economic mainstay, but it no longer leads the state in employment or share of gross state product. Durable-goods manufacturing and private services have evolved as the drivers of the economy. Tourism is also a booming industry in the state, generating over a billion dollars' worth of economic activity each year. South Dakota is the second-largest producer of sunflower seed and oil in the nation. South Dakota is also a leading producer of a variety of small grains including oats, barley, rye, flaxseed, sorghum and alfalfa.



TENNESSEE



Climate

- Medium Precipitation
- Hot Summers
- Mild to Cold Winters

5 Largest Cities

- Memphis
- New South Memphis
- Nashville
- Knoxville
- Chattanooga

Top Attractions

- Memphis
- Great Smoky Mountain National Park
- The Parthenon
- Broadway
- The BellSouth Building

Top 5 Universities

- Vanderbilt University
- University of Tennessee
- Middle Tennessee State University
- University of Memphis
- East Tennessee State University

Major Industries

- Mining (Coal)
- Electrical Power
- Farming (Tobacco, Cattle, Soybeans, Cotton)
- Tourism
- Automobile Manufacturing

Fortune 500 Companies

- FedEx
- HCA Holdings
- International Paper
- Dollar General
- AutoZone

Tennessee has 9 Fortune 500 Companies

Located in the Southeastern United States, Tennessee is dominated by the Appalachian Mountains in the east and the Mississippi River in the west. A melting pot of musical styles, the state has long been recognized for the critical role it played in development of many forms of American popular music, including rockabilly, rock and roll, blues, rhythm and blues, and country. From the eastern mountains came Appalachian folk songs and bluegrass, while country music flowered in Nashville. Gospel, blues, rockabilly, and ultimately, rock 'n' roll, all stemmed from the Mississippi belt. Nashville is a major music performance and recording center and also boasts a host of fine colleges and churches. To the southwest is Memphis, home of the blues and the birthplace of rock 'n' roll, near the Mississippi border. Tennessee's largest city and a major trading center, Memphis is known chiefly for being the location of Graceland, the home of Elvis Presley.



The state is now predominantly industrial; the majority of its population lives in urban areas. Among the most important products are chemicals, textiles, apparel, electrical machinery, furniture, and leather goods. Other lines include food processing, lumber, primary metals, and metal products. The state ranks high in the production of marble, zinc, pyrite, and ball clay.

Jack Daniel's Tennessee Whiskey is one of the state's most famous products. The state is a leading soybean and tobacco producer. Other farming income is derived from livestock and dairy products, as well as greenhouse and nursery products and cotton.

Jack Daniel's Tennessee Whiskey is one of the state's most famous products. The state is a leading soybean and tobacco producer. Other farming income is derived from livestock and dairy products, as well as greenhouse and nursery products and cotton.





TEXAS



Climate

- Low to Medium Precipitation
- Hot Summers
- Mild to Cold Winters

5 Largest Cities

- Houston
- San Antonio
- Dallas
- Austin
- Fort Worth

Top Attractions

- The Alamo
- River Walk
- Dallas Museum of Art
- State Capital Complex
- Texas Oil

Top 5 Universities

- Rice University
- University of Texas-Austin
- Texas A&M
- Southern Methodist University
- Baylor University

Major Industries

- Petroleum and Natural Gas
- Farming (Cotton, Livestock)
- Steel
- Banking
- Insurance

Fortune 500 Companies

- Exxon Mobil
- AT&T
- Valero Energy
- Halliburton
- Conoco Phillips
- Plains All American Pipeline
- Sysco

Texas has 52 Fortune 500 Companies

“Everything is bigger in Texas” is slogan Texan natives like to brag about, and there is ample evidence on display to support the claim. The second largest state in the United States, in Texas you’ll find almost everything to be over-sized: the mountains; the wide-open expanses; the cities; the food portions; and yes, some of the people too. The “Lone Star State” is world renowned for its Wild West spirit and a brazen “don’t mess with Texas” attitude.



Despite its cowboy image, Texas contains cosmopolitan and sophisticated cities, creative businesses districts, Internet millionaires and artistic communities. Texas



boasts a powerful economy to rival that of any advanced Western nation. The capital city, Austin, is a dynamic and modish city with a lively music scene. Houston is an expansive, multi-ethnic municipality with plenty of charm, and is famously the home of NASA. Dallas, setting of the extremely popular television show of the 1980s, with its glittering high-rise skyline, elegant stores, fine restaurants and a rich cultural and sporting life, is another case

to point. Dallas is home to the famous Dallas Cowboys football team.

Possessing enormous natural resources, Texas is a major agricultural state and an industrial giant. Texas ranches and farms also produce poultry and eggs, dairy products, and numerous cash crops. Texas is also rich in natural gas and oil, and a number of other minerals. Millions of tourists spend tens of billions of dollars annually in the great state of Texas.



UTAH



Climate

- Low to High Precipitation
- Warm Summers
- Cold Winters

10 Largest Cities

- Salt Lake City
- West Valley City
- Provo
- West Jordan
- Sandy Hills

Top Attractions

- Golfing in St. George
- Skiing and Snowboarding in Snowbasin
- Dinosaurs and Prehistoric Adventures
- Park City Mountain Resort
- Zion National Park

Top 5 Universities

- Brigham Young University
- University of Utah
- Utah Valley State College
- Weber State University
- Utah State University

Major Industries

- Oil
- Natural Gas
- Mining (Coal, copper, Iron, Silver, Gold)
- Steel Making
- Farming (Cattle, Sheep, Dairy Products)
- Tourism (Skiing)

Fortune 500 Companies

- Huntsman

Containing numerous national and state parks, Utah is favorite destination of outdoor enthusiasts. Surrounded by the Wasatch Mountains, and home to Bryce Canyon and Zion National Parks, as well as Capitol Reef National Park and Timpanogos Cave National Monument, this states landscape offers a delicious feast for all. Besides



its natural beauty, Utah boasts historic buildings, churches, museums, and science exhibitions and arts festivals. Salt Lake City is the world center of The Mormon Church and contains a number of religious and secular architectural landmarks. The Great Salt Lake, a major tourist attraction, is salty because it has no outlet. Great Salt Lake draws visitors to enjoy what John Muir called "one of the great views on the American Continent."

Rich in natural resources, Utah has long been a leading producer of copper, gold, silver, lead, zinc, potassium salts, and molybdenum. Oil and natural gas have also become major products. Utah is the only state that produces Gilsonite, a pure form of asphalt used in dark colored printing inks and paints, oil well drilling muds and cements, asphalt modifiers, foundry sands additives, and a wide variety of chemical products.

The state's top agricultural commodities include cattle and calves, dairy products, hay, greenhouse and nursery products, and hogs. Utah's traditional industries of agriculture and mining are complemented by increased tourism and growing aerospace, biomedical, and computer-related businesses. Utah is a great vacationland with approximately 17702 km (11,000 miles) of fishing streams and extensive lakes and reservoirs.





VERMONT



Climate

- Medium Precipitation
- Mild Summers
- Cold Winters

5 Largest Cities

- Burlington
- South Burlington
- Colchester
- Rutland
- Essex Junction

Top Attractions

- Wilson Castle
- American Precision Museum
- Ben and Jerry's Factory Tour
- Billings Farm and Museum
- Boyden Valley Winery

Top 5 Universities

- University of Vermont
- Champlain College
- Norwich University
- Saint Michaels College
- Middlebury College

Major Industries

- Maple Syrup
- Farming (Dairy)
- Tourism
- Electronics
- Forest Products

Vermont is a state that is best enjoyed outdoors. Although it is the only New England state without any seashore, its border with Lake Champlain more than compensates. Its largest city, Burlington, affords magnificent views of this body of water, and has many sporting and recreation areas. This small, mountainous



state (its name is derived from the French for "The Green Mountains") contains 16 alpine resorts and nearly 30 cross-country trails that draw skiers in droves. Cruise down country lanes to picturesque villages, with white churches, covered

bridges and hillsides ablaze with brilliant colors in the autumn. In the spring, sugar maples are tapped for their famous maple syrup, which Vermonters maintain is second to none. The Von Trapp Family, portrayed in the Hollywood movie "The Sound of Music," immigrated to the United States.



Vermont leads the nation in the production of monument granite,

marble, and maple products. It is also a leader in the production of talc. Vermont's rugged, rocky terrain discourages extensive agricultural farming, but is well suited to raising fruit trees and to dairy farming. Principal industrial products include electrical equipment, fabricated metal products, printing and publishing, and paper and allied products.

Tourism is a major industry in Vermont. Vermont's many famous ski areas include Stowe, Killington, Mt. Snow, Okemo, Jay Peak, and Sugarbush. Hunting and fishing also attract many visitors to Vermont each year.



VIRGINIA



Climate

- Medium to Low Precipitation
- Hot Summers
- Cool to Cold Winters

5 Largest Cities

- Virginia Beach
- Norfolk
- Chesapeake
- Arlington
- Richmond

Top Attractions

- Colonial Williamsburg
- Luray Caverns
- Virginia Beach
- Busch Gardens
- Natural Bridge

Top 5 Universities

- University of Virginia
- College of William and Mary
- Virginia Tech
- George Mason University
- Virginia Commonwealth University

Major Industries

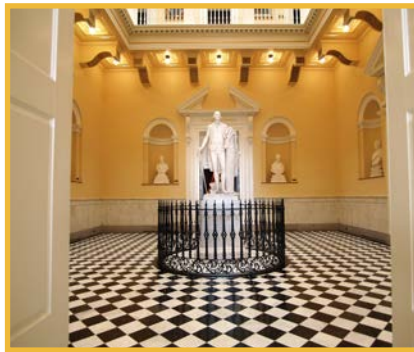
- Farming (Tobacco, Peanuts, Corn, Sweet Potatoes)
- Tourism
- Navy Warships
- Mining (Coal)
- Lumber

Fortune 500 Companies

- Freddie Mac
- Capital One Financial
- General Dynamics
- Computer Sciences
- Northrop Grumman

Virginia has 24 Fortune 500 Companies

Located in Southeast of the United States, Virginia is one of the country's most historic and scenic states. The site of the first permanent English settlement in North America, (Jamestown, founded in 1607), Virginia has played a central role in the history of this nation. The Virginia General Assembly is the oldest legislature in the Western Hemisphere. A number of the nation's founding fathers, including George Washington and Thomas Jefferson, hail from this state. Driving trails link



more than 250 Civil War sites across Virginia. Richmond, the capital of the Confederacy in the Civil War, has many fine old buildings and cultural options. Old Town Alexandria was the home of the famous Confederate General Robert E. Lee.

The Shenandoah Valley, with its forests, caverns, waterfalls and popular resorts, is nestled in the Appalachian Mountains to the west. The Chesapeake Bay is a complex ecosystem with a long history of pirates and shipwrecks. Today it has thriving oyster farms and is popular for fishing, swimming, boating and sailing.

Virginia has a diverse economy and highly successful economy. Agriculture is the largest industry in the state, Virginia has a burgeoning technology sector, and Virginia has the highest concentration of technology workers in the nation. Virginia is home to a number of federal agencies, including the Central Intelligence Agency, the Department of Defense, and the United States Patent and Trademark Office. The Pentagon is also located in this state. Wineries and vineyards also contribute substantially to the state economy.



WASHINGTON



Climate

- Low to High Precipitation
- Warm Summers
- Cool Winters

5 Largest Cities

- Seattle
- Spokane
- Tacoma
- Vancouver
- Bellevue

Top Attractions

- Olympic National Park
- Mount Baker Highway
- Mount Rainier National Park
- Coulee Corridor
- Skagit Valley (Tulips)

Top 5 Universities

- University of Washington
- Washington State University
- Western Washington University
- Eastern Washington University
- Central Washington University

Major Industries

- Farming (Apple, Berries, Nuts, Cattle, Wheat)
- Lumber
- Tourism
- Computer Software
- Aircraft
- Hydroelectric Power

Fortune 500 Companies

- Microsoft
- Amazon.com
- Starbucks
- Costco Wholesale
- Expeditors International of Washington

Washington has 8 Fortune 500 Companies

The home of Boeing, Microsoft, Starbucks and Amazon, Washington is no longer the U.S.'s best-kept secret for corporate start-ups. Located in the Pacific Northwest, Washington State borders Canada and the Pacific Ocean and offers some of the United States' finest scenery for active holidays in the great outdoors. Washington State has the second-highest population of any western state, yet within minutes, visitors can travel from any city center to peaceful countryside.



Washington State boasts many fine beaches and small resorts along the Pacific coast, and much of the state is covered by coniferous forest. Activities include yachting on Puget Sound, hiking along the Pacific Crest National Scenic Trail, and mountain climbing in the Cascades and the Olympic Mountains.

Beyond its renowned tech industry, Washington State is a leading lumber producer. Its rugged surface is rich in stands of Douglas fir, hemlock, ponderosa and white pine, spruce, larch, and cedar. The state holds first place in apples, lentils, dry edible peas, hops, pears, red raspberries, spearmint oil, and sweet cherries, and ranks high in apricots, asparagus, grapes, peppermint oil, and potatoes. Livestock and livestock products make important contributions to the state's total farm revenue and the commercial fishing catch of salmon, halibut, and bottom fish makes a significant contribution to the state's economy.

Manufacturing industries in Washington include aircraft and missiles, shipbuilding and other transportation equipment, lumber, food processing, metals and metal products, chemicals, and machinery.



WASHINGTON D.C.



Climate

- Medium Precipitation
- Hot and Humid Summers
- Cool Winters

Top Attractions

- The Smithsonian
- National Monuments and Memorials
- Three Houses of Government
- Georgetown
- C & O Canal
- Kennedy Center
- Wolftrap Farm Park
- Great Falls Park
- Mount Vernon
- Old Town Alexandria

Top 5 Universities

- Georgetown University
- George Washington University
- American University
- Howard University
- Catholic University of America

Major Industry

- Government

Fortune 500 Companies

- Fannie Mae
- Danaher
- Pepco Holdings

The capital of the United States, Washington, D.C. ("District of Columbia") is commonly referred to as Washington, "the District," or simply D.C. The District is under the exclusive jurisdiction of the U.S. Congress and is therefore not a U.S. state in its own right. Being the seat of the U.S. federal government, if the principles of democracy and power are what you seek, then the District is the place you ought to be.



The District is located in the mid-Atlantic region of the U.S. East Coast. It hosts nearly 200 foreign embassies and international organizations such as the World Bank, the International Monetary Fund (IMF), the Organization of American States, the Inter-American Development Bank, and the Pan American Health Organization. The city itself is a feast of remarkable architecture, superb museums (including the Smithsonian Institution museums and galleries) and top-rated restaurants.

As one would imagine, the District's economy is mostly tied directly to government; however, the District has non-government-related industries, including education, finance, public policy, and scientific research.



WEST VIRGINIA



Climate

- Medium to Low Precipitation
- Hot Summers
- Cool to Cold Winters

5 Largest Cities

- Charleston
- Huntington
- Parkersburg
- Morgantown
- Wheeling

Top Attractions

- Snowshoe Mountain
- Stonewall Jackson Lake
- West Virginia Independence Hall
- Capital Music Hall
- West Virginia Symphony Orchestra

Top 5 Universities

- West Virginia University
- Marshall University
- Fairmont State University
- Mountain State University
- Shepherd University

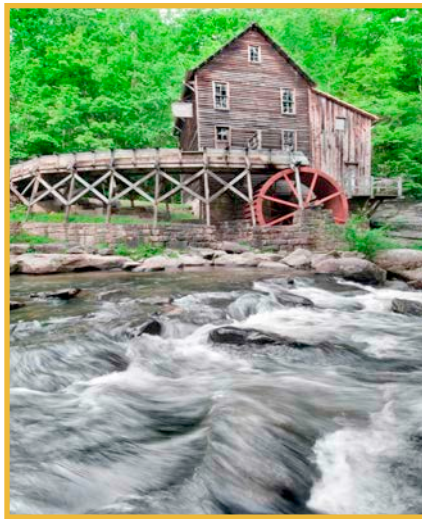
Major Industries

- Mining (Coal)
- Livestock
- Chemical Manufacturing
- Glass Products
- Tourism

Located in the Appalachian region of the Southern United States, the mountainous state of West Virginia has a history of coal mining, poverty and physical isolation. Today, however, tourists flock to this beautiful region to enjoy historic sightseeing, Appalachian music and crafts, and an abundance of recreational sports, including skiing and other winter sports, mountain-biking,



white-water rafting, hiking and fishing.



Today, the state ranks second in the nation in total coal production, with about 12.5% of the U.S. total. It is also a leader in steel, glass, aluminum, and chemical manufactures. Major agricultural commodities are broilers, cattle and calves, chicken eggs, dairy products, and turkeys. Logging is also a major sector of the West Virginian economy because of the extensive forests within the state.

Tourism is increasingly popular in mountainous West Virginia. More than 400,000 hectares (1 million acres) have been set aside in 37 state parks and recreation areas and in 9 state forests and 2 national forests. Bungee jumping in the New River Gorge Bridge and whitewater rafting down the Gauley River provide ample challenges for thrill seekers.



WISCONSIN

WISCONSIN



1848

Climate

- Low Precipitation
- Warm Summers
- Very Cold Winters

5 Largest Cities

- Milwaukee
- Madison
- Green Bay
- Kenosha
- Racine

Top Attractions

- Milwaukee Art Museum
- Noah's Ark Water Park
- Circus World
- Lake Geneva
- Harley-Davidson Museum

Top 5 Universities

- University of Wisconsin
- Marquette University
- University of Wisconsin-Milwaukee
- University of Wisconsin-Oshkosh
- University of Wisconsin-Whitewater

Major Industries

- Dairy Products
- Farming (Corn)
- Machinery
- Paper Manufacturing
- Beer
- Tourism

Fortune 500 Companies

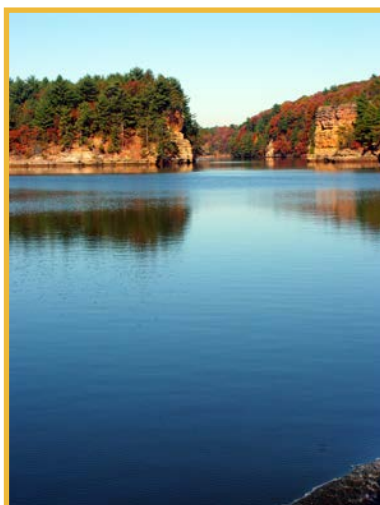
- Kohl's
- Oshkosh
- Bemis
- Johnson Controls
- Harley-Davidson

Wisconsin has 9 Fortune 500 Companies

Located in the Great Lakes Region of the Midwest, Wisconsin is a striking state, with over 15,000 lakes and thousands of miles of rivers and streams. Its varied countryside includes sandstone cliffs, sandy beaches, northern forests and rich, southern farmland. Wisconsin is famed for its hospitality and friendly



atmosphere and is known as the beer capital of the nation. Milwaukee, on the southeast shores of Lake Michigan, is the state's largest city. The University town of Madison is consistently ranked among the best places in the United States to live.



Wisconsin's economy is rests upon vibrant manufacturing, agriculture, consumer product, and tourism sectors. Its manufacturing sector is concentrated around transportation and capital equipment. Its main agricultural products are cheese, milk and butter. Wisconsin is known internationally for its cheese, and it leads the nation in cheese production. Corn, cranberries, ginseng, and snap beans are additional major agricultural products produced in state. The state's leading consumer goods are paper, packaging, and other consumer goods.

Tourism contributes substantially to the state's economy. The state has over 14,000 lakes, of which Winnebago is the largest. Water sports, ice boating, and fishing are popular, as are skiing and hunting. The nearly 100 state parks, forests, and recreation areas take up one-seventh of the land. Recently, the development and manufacture of health care devices and software and the film industry has become an important part of the state's economy. The state's mines produce copper, iron ore, lead, and zinc.





WYOMING



Climate

- Very Low Precipitation
- Warm Summers
- Cold Winters

5 Largest Cities

- Cheyenne
- Casper
- Laramie
- Gillette
- Rock Springs

Top Attractions

- Yellowstone National Park
- Buffalo Bill Historical Center
- Cheyenne Frontier Days Rodeo
- Fort Laramie National Historic Site
- Devils Tower National Monument

Top 5 Universities

- University of Wyoming
- Casper College
- Sheridan College
- Northwest College
- Central Wyoming College

Major Industries

- Farming (Cattle, Sheep)
- Mining (Coal, Uranium)
- Oil
- Natural Gas
- Tourism

In the heart of the Rockies, Wyoming is known as the "Cowboy State." It is the ninth-largest state in the United States and has the smallest population. The spirit of the Wild West is alive and well in Wyoming, with its open spaces, rugged country and breathtaking scenery. Geographical attractions include

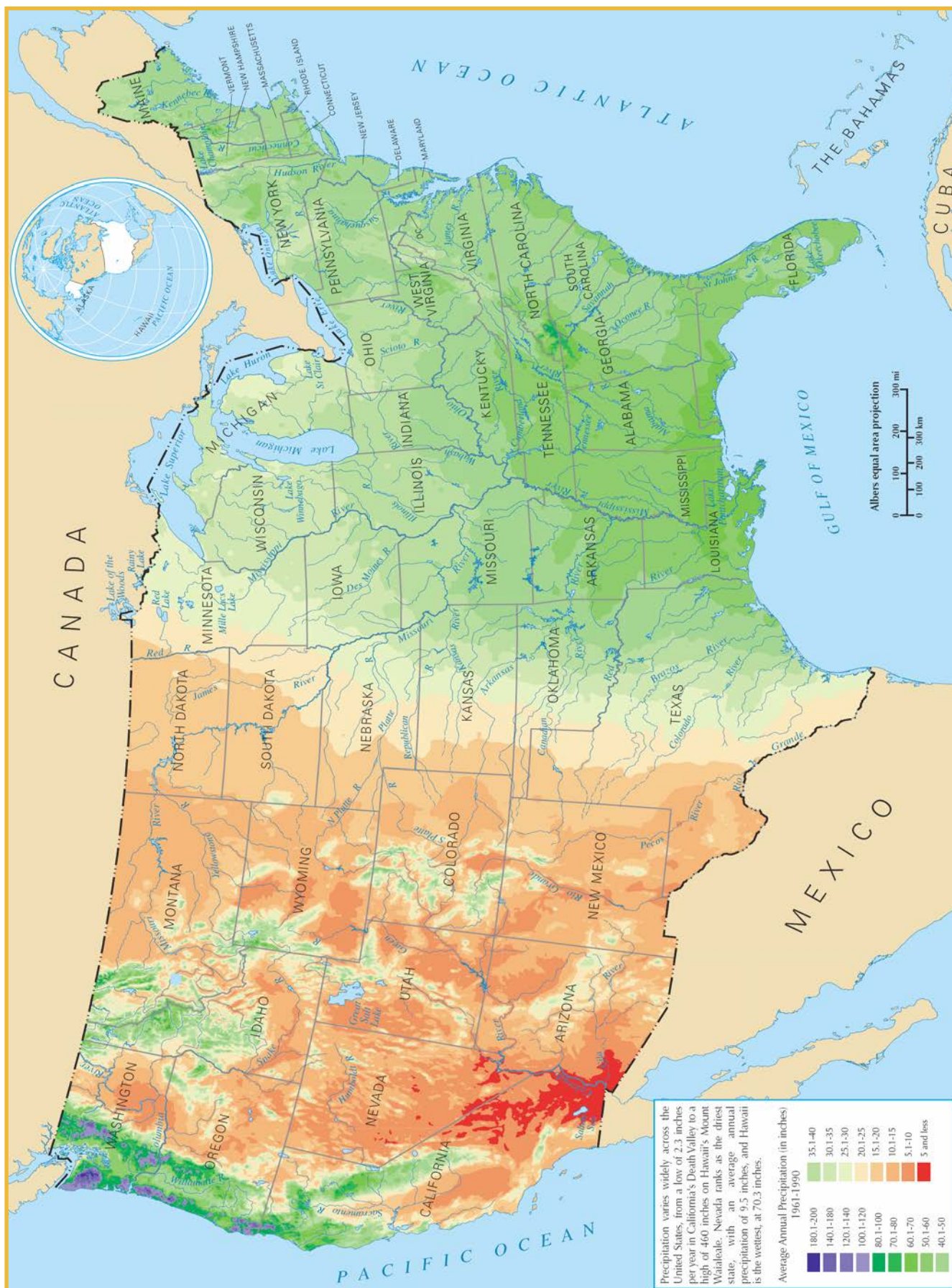


11 major mountain ranges, prairies, grasslands, parks, forests, lakes and rivers.

Old Faithful Geyser in Yellowstone Park has long been a favorite tourist attraction, drawing spectators to witness its regular eruptions that occur approximately every 91 minutes. Devils Tower, made famous in the Hollywood film "Close Encounters of the Third Kind," draws approximately 400,000 visitors a year.

Wyoming's towering mountains and vast plains provide spectacular scenery, grazing lands for sheep and cattle, and rich mineral deposits. Wyoming is the leading coal-producing state and a leader in the production of petroleum and natural gas. Wyoming has the world's largest sodium carbonate (natrona) deposits and has the nation's second largest uranium deposits. A leading producer of sheep and wool, Wyoming is also a major producer of beef cattle and hogs. Principal crops include wheat, oats, sugar beets, corn, barley, and alfalfa.





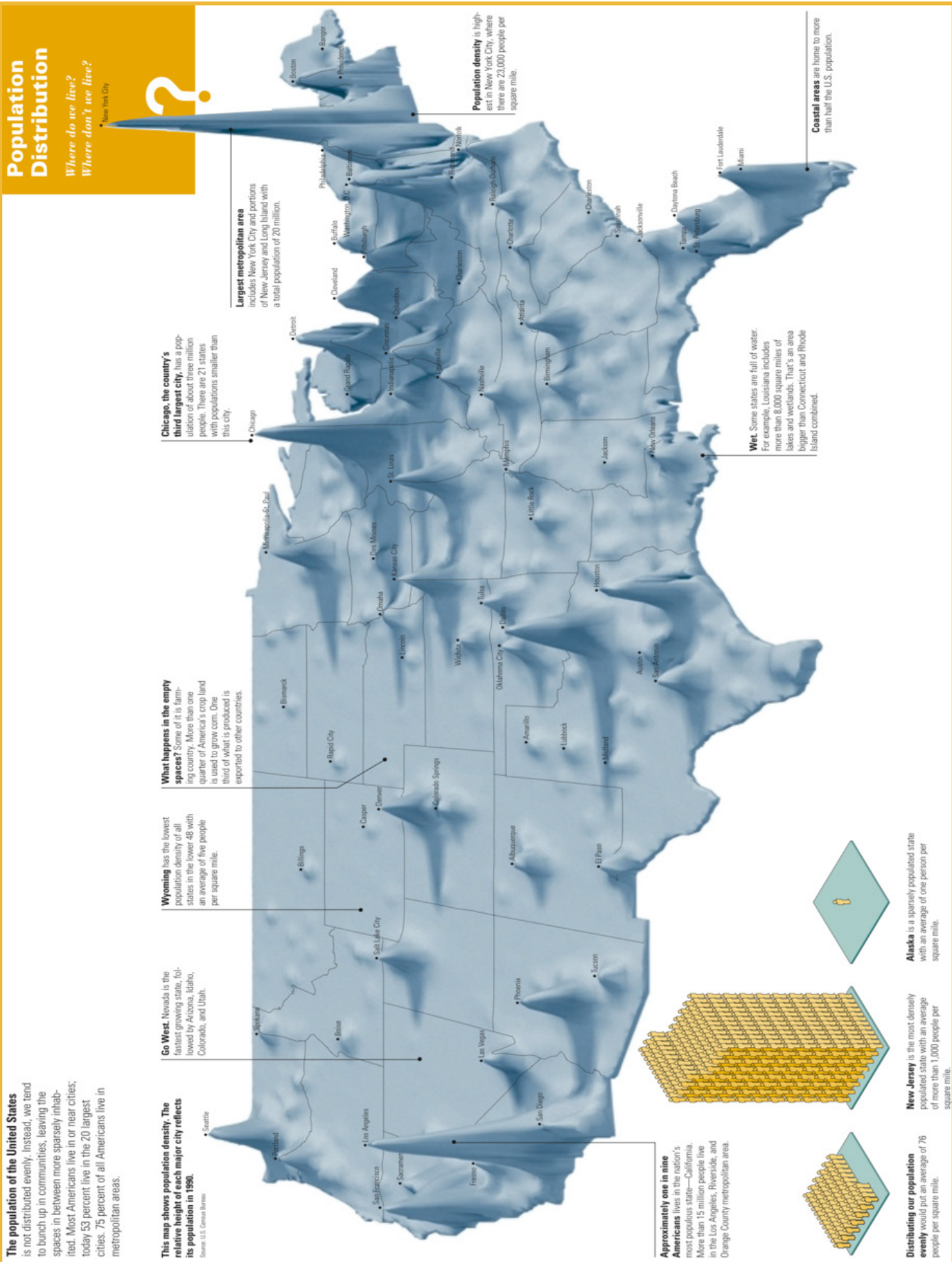
United States Average Annual Precipitation





Population Distribution

Where do we live?
Where don't we live?



United States Population Distribution





CHUNG, MALHAS & MANTEL
A PROFESSIONAL LIMITED LIABILITY COMPANY



CHUNG, MALHAS & MANTEL, PLLC

The Pioneer Building
600 First Avenue, Suite 400
Seattle, WA 98104

Telephone: (206) 264-8999
Facsimile: (206) 264-9098

Website: www.cmmrlawfirm.com
Email: Info@cmmrlawfirm.com